

# Anti-GR (Ab-226) Polyclonal Antibody



<u>Catalog No.</u>	<u>Size</u>
A200043-01	50 µl
A200043-02	100 µl

<b>Specificity</b>	Anti-GR (Ab-226) (human mouse rat)
<b>Source</b>	Rabbit Polyclonal
<b>Application</b>	WB ELISA IHC
<b>Form</b>	Liquid, 1 mg/ml

## Product

**Swiss-Prot No.:** P04150

**Other Names:** GCR, GRL, GRL1, NR3C1, glucocorticoid receptor

## Specificity and Sensitivity

GR (Ab-226) antibody detects endogenous levels of total GR protein.

## Source and Purification

The antiserum was produced against synthesized non-phosphopeptide derived from human GR around the phosphorylation site of serine 226/234/246 (L-L-S-P-L). The antibody was affinity-purified from rabbit antiserum by affinity-chromatography using epitope-specific immunogen.

## Application Notes

Optimal working dilutions should be determined experimentally by the investigator. Suggested starting dilutions are as follows:

WB: 1:500~1:3000    ELISA: 1:10000    IHC: 1:50~1:100

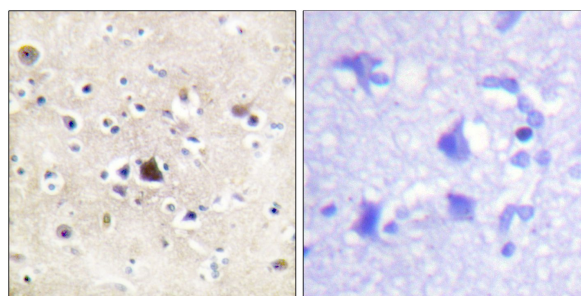
## Storage Buffer

Rabbit IgG in phosphate buffered saline (without Mg<sup>2+</sup> and Ca<sup>2+</sup>), pH 7.4, 150mM NaCl, 0.02% sodium azide and 50% glycerol.

## Storage Instructions

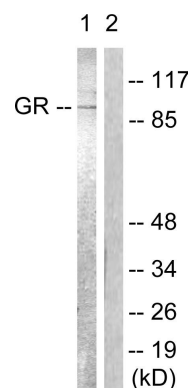
Stable for 1 year at -20°C from date of shipment. For maximum recovery of product, centrifuge the original vial after thawing and prior to removing the cap. Aliquot to avoid repeated freezing and thawing. Aliquot will be stable at 4°C for 3 months.

## Images



Peptide                    -                    +

Immunohistochemical analysis of paraffin-embedded human brain tissue using GR (Ab-226) antibody.



EGF                    +    +  
Peptide                -    +

Western blot analysis of extracts from Jurkat cells, treated with EGF (200ng/ml, 15mins), using GR (Ab-226) antibody.