

Anti-Histone H3 (Ab-28) Polyclonal Antibody



| <u>Catalog No.</u> | <u>Size</u> |
|--------------------|-------------|
| A200045-01 | 50 µl |
| A200045-02 | 100 µl |

| | |
|--------------------|---|
| Specificity | Anti-Histone H3 (Ab-28) (human mouse rat) |
| Source | Rabbit Polyclonal |
| Application | WB ELISA IHC |
| Form | Liquid, 1 mg/ml |

Product

Swiss-Prot No.: P68431

Other Names: H3/a; H3/c; H3/d; H3/f; H3/h; H3/i; H3/j; H3/k; H3/l; H31; HIST1H3A; histone H3.1

Specificity and Sensitivity

Histone H3 (Ab-28) antibody detects endogenous levels of total Histone H3 protein.

Source and Purification

The antiserum was produced against synthesized non-phosphopeptide derived from human Histone H3 around the phosphorylation site of serine 28 (R-K-S^P-A-P).

The antibody was affinity-purified from rabbit antiserum by affinity-chromatography using epitope-specific immunogen.

Application Notes

Optimal working dilutions should be determined experimentally by the investigator. Suggested starting dilutions are as follows:

WB: 1:500~1:3000 ELISA: 1:1000 IHC: 1:50~1:100

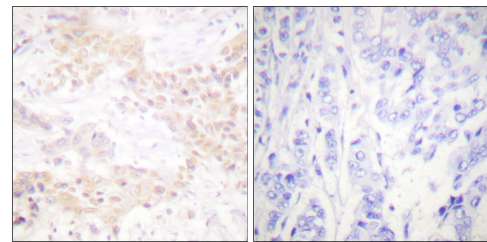
Storage Buffer

Rabbit IgG in phosphate buffered saline (without Mg²⁺ and Ca²⁺), pH 7.4, 150mM NaCl, 0.02% sodium azide and 50% glycerol.

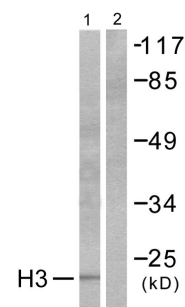
Storage Instructions

Stable for 1 year at -20°C from date of shipment. For maximum recovery of product, centrifuge the original vial after thawing and prior to removing the cap. Aliquot to avoid repeated freezing and thawing. Aliquot will be stable at 4°C for 3 months.

Images



Peptide - +
Immunohistochemistry analysis of paraffin-embedded human breast carcinoma tissue using Histone H3 (Ab-28) antibody.



Serum + +
Peptide - +

Western blot analysis of extracts from HuvEc cells treated with Serum (20%, 30mins), using Histone H3 (Ab-28) antibody.