

Anti-IKK- γ (Ab-31) Polyclonal Antibody



<u>Catalog No.</u>	<u>Size</u>
A200047-01	50 μ l
A200047-02	100 μ l

Specificity	Anti-IKK- γ (Ab-31) (human mouse)
Source	Rabbit Polyclonal
Application	WB ELISA IHC
Form	Liquid, 1 mg/ml

Product

Swiss-Prot No.: Q9Y6K9

Other Names: FIP-3, FIP3, I-kappa-B kinase gamma, IKBKG, IKK-gamma, IKKAP1, IKKG, I κ B kinase gamma subunit, I κ B kinase-associated protein 1, Inhibitor of nuclear factor kappa-B kinase gamma subunit, NEMO, NF-kappaB essential modifier, NF-kappaB essential modulator, mFIP-3

Specificity and Sensitivity

IKK- γ (Ab-31) antibody detects endogenous levels of total IKK- γ protein.

Source and Purification

The antiserum was produced against synthesized non-phosphopeptide derived from human IKK- γ around the phosphorylation site of serine 31 (E-E-S^P-P-L).

The antibody was affinity-purified from rabbit antiserum by affinity-chromatography using epitope-specific immunogen.

Application Notes

Optimal working dilutions should be determined experimentally by the investigator. Suggested starting dilutions are as follows:

WB: 1:500~1:3000 ELISA: 1:1000 IHC: 1:50~1:100

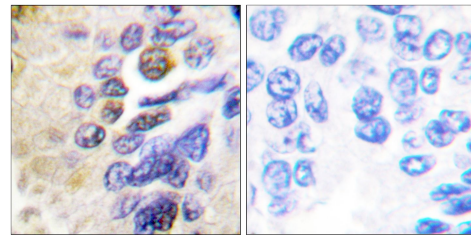
Storage Buffer

Rabbit IgG in phosphate buffered saline (without Mg²⁺ and Ca²⁺), pH 7.4, 150mM NaCl, 0.02% sodium azide and 50% glycerol.

Storage Instructions

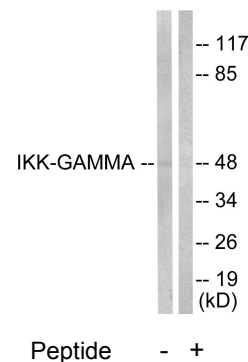
Stable for 1 year at -20°C from date of shipment. For maximum recovery of product, centrifuge the original vial after thawing and prior to removing the cap. Aliquot to avoid repeated freezing and thawing. Aliquot will be stable at 4°C for 3 months.

Images



Peptide - +

Immunohistochemical analysis of paraffin-embedded human lung carcinoma tissue, using IKK- γ (Ab-31) Antibody.



Western blot analysis of extracts from 293 cells, using IKK- γ (Ab-31) Antibody