

# Anti-Arrestin 1 (Ab-412) Polyclonal Antibody



<u>Catalog No.</u>	<u>Size</u>
A200048-01	50 µl
A200048-02	100 µl

<b>Specificity</b>	Anti-Arrestin 1 (Ab-412) (human)
<b>Source</b>	Rabbit Polyclonal
<b>Application</b>	WB ELISA IHC IF
<b>Form</b>	Liquid, 1 mg/ml

## Product

**Swiss-Prot No.:** P49407

**Other Names:** ARR1, arrestin 2, arrestin beta 1, beta-arrestin-1

## Specificity and Sensitivity

Arrestin 1 (Ab-412) antibody detects endogenous levels of total Arrestin 1 protein.

## Source and Purification

The antiserum was produced against synthesized non-phosphopeptide derived from human Arrestin 1 around the phosphorylation site of serine 412 (T-G-S<sup>P</sup>-P-Q).

The antibody was affinity-purified from rabbit antiserum by affinity-chromatography using epitope-specific immunogen.

## Application Notes

Optimal working dilutions should be determined experimentally by the investigator. Suggested starting dilutions are as follows:

WB: 1:500~1:3000    ELISA: 1:1000

IHC: 1:50~1:100    IF: 1:100~1:500

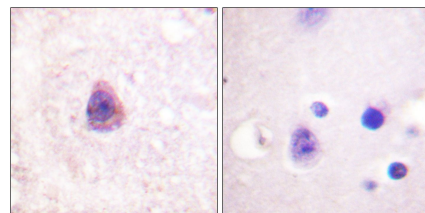
## Storage Buffer

Rabbit IgG in phosphate buffered saline (without Mg<sup>2+</sup> and Ca<sup>2+</sup>), pH 7.4, 150mM NaCl, 0.02% sodium azide and 50% glycerol.

## Storage Instructions

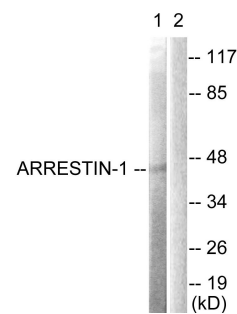
Stable for 1 year at -20°C from date of shipment. For maximum recovery of product, centrifuge the original vial after thawing and prior to removing the cap. Aliquot to avoid repeated freezing and thawing. Aliquot will be stable at 4°C for 3 months.

## Images



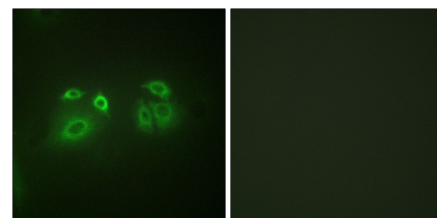
Peptide                    -                    +

Immunohistochemistry analysis of paraffin-embedded human brain tissue, using Arrestin 1 (Ab-412) antibody.



Etoposide            +    +  
Peptide                -    +

Western blot analysis of extracts from COS7 cells, treated with Etoposide (25µM, 60mins), using Arrestin 1 (Ab-412) antibody.



Peptide                    -                    +

Immunofluorescence analysis of A549 cells, using Arrestin 1 (Ab-412) antibody.