

# Anti-FGFR1 (Ab-766) Polyclonal Antibody



<u>Catalog No.</u>	<u>Size</u>
A200051-01	50 µl
A200051-02	100 µl

<b>Specificity</b>	Anti-FGFR1 (Ab-766) (human mouse)
<b>Source</b>	Rabbit Polyclonal
<b>Application</b>	WB ELISA IHC
<b>Form</b>	Liquid, 1 mg/ml

## Product

**Swiss-Prot No.:** P11362

**Other Names:** EC 2.7.10.1, FGFBR, FGFR-1, FGR1, FLG, FLT2, Fms-like tyrosine kinase-2, MFR, bFGF-R, c-fgr, kinase FGFR1

## Specificity and Sensitivity

FGFR1 (Ab-766) antibody detects endogenous levels of total FGFR1 protein.

## Source and Purification

The antiserum was produced against synthesized non-phosphopeptide derived from human FGFR1 around the phosphorylation site of tyrosine 766 (Q-E-Y<sup>P</sup>-L-D).

The antibody was affinity-purified from rabbit antiserum by affinity-chromatography using epitope-specific immunogen.

## Application Notes

Optimal working dilutions should be determined experimentally by the investigator. Suggested starting dilutions are as follows:

WB: 1:500~1:3000 ELISA: 1:5000 IHC: 1:50~1:100

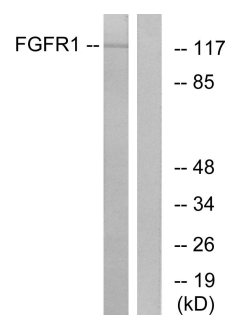
## Storage Buffer

Rabbit IgG in phosphate buffered saline (without Mg<sup>2+</sup> and Ca<sup>2+</sup>), pH 7.4, 150mM NaCl, 0.02% sodium azide and 50% glycerol.

## Storage Instructions

Stable for 1 year at -20°C from date of shipment. For maximum recovery of product, centrifuge the original vial after thawing and prior to removing the cap. Aliquot to avoid repeated freezing and thawing. Aliquot will be stable at 4°C for 3 months.

## Images



Peptide - +

Western blot analysis of extracts from HepG2 cells, using FGFR1 (Ab-766) antibody.