

# Anti-FOXO1/3/4-pan Polyclonal Antibody



<u>Catalog No.</u>	<u>Size</u>
A200052-01	50 µl
A200052-02	100 µl

<b>Specificity</b>	Anti-FOXO1/3/4-pan (human mouse)
<b>Source</b>	Rabbit Polyclonal
<b>Application</b>	IHC ELISA
<b>Form</b>	Liquid, 1 mg/ml

## Product

**Swiss-Prot No.:** Q12778/O43524/P98177

**Other Names:** FKHR, FOXO1, Forkhead box protein O1A, Forkhead in rhabdomyosarcoma, AF6q21 protein, FKHR2, FKHL1, FOXO3, Forkhead box O3, Forkhead box protein O3A, Forkhead in rhabdomyosarcoma-like 1, AFX, AFX1, Afxh, Forkhead box protein O4, MLLT7, Putative forkhead domain AFX1, putative fork head domain AFX1

## Specificity and Sensitivity

FOXO1/3/4-pan antibody detects endogenous levels of total FOXO1/3/4-pan protein.

## Source and Purification

The antiserum was produced against synthesized peptide derived from Internal of human FOXO1/3/4-pan.

The antibody was affinity-purified from rabbit antiserum by affinity-chromatography using epitope-specific immunogen.

## Application Notes

Optimal working dilutions should be determined experimentally by the investigator. Suggested starting dilutions are as follows:

ELISA: 1:1000      IHC: 1:50~1:100

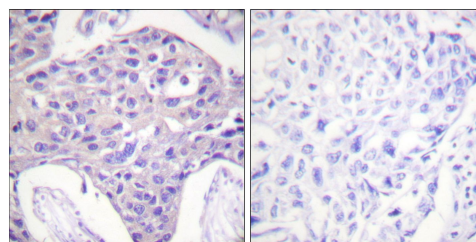
## Storage Buffer

Rabbit IgG in phosphate buffered saline (without Mg<sup>2+</sup> and Ca<sup>2+</sup>), pH 7.4, 150mM NaCl, 0.02% sodium azide and 50% glycerol.

## Storage Instructions

Stable for 1 year at -20°C from date of shipment. For maximum recovery of product, centrifuge the original vial after thawing and prior to removing the cap. Aliquot to avoid repeated freezing and thawing. Aliquot will be stable at 4°C for 3 months.

## Images



Peptide      -      +

Immunohistochemistry analysis of paraffin-embedded human breast carcinoma tissue, using FOXO1/3/4-pan antibody.