

# Anti-IRF-3 (Ab-385) Polyclonal Antibody



<u>Catalog No.</u>	<u>Size</u>
A200054-01	50 µl
A200054-02	100 µl

<b>Specificity</b>	Anti-IRF-3 (Ab-385) (human mouse rat)
<b>Source</b>	Rabbit Polyclonal
<b>Application</b>	WB ELISA HIC IF
<b>Form</b>	Liquid, 1 mg/ml

## Product

**Swiss-Prot No.:** Q14653

**Other Names:** IRF3, Interferon regulatory factor 3

## Specificity and Sensitivity

IRF-3 (Ab-385) antibody detects endogenous levels of total IRF-3 protein.

## Source and Purification

The antiserum was produced against synthesized non-phosphopeptide derived from human IRF-3 around the phosphorylation site of serine 385 (G-A-S<sup>P</sup>-S-L).

The antibody was affinity-purified from rabbit antiserum by affinity-chromatography using epitope-specific immunogen.

## Application Notes

Optimal working dilutions should be determined experimentally by the investigator. Suggested starting dilutions are as follows:

WB: 1:500~1:3000    IHC: 1:50~1:100  
IF: 1:100~1:500    ELISA: 1:5000

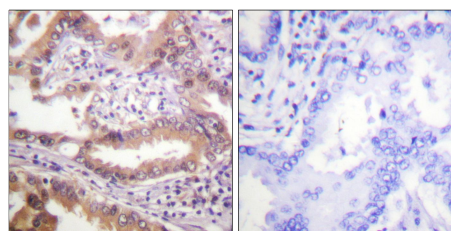
## Storage Buffer

Rabbit IgG in phosphate buffered saline (without Mg<sup>2+</sup> and Ca<sup>2+</sup>), pH 7.4, 150mM NaCl, 0.02% sodium azide and 50% glycerol.

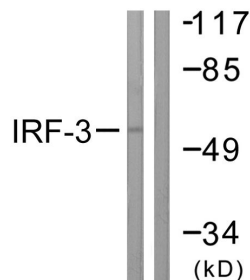
## Storage Instructions

Stable for 1 year at -20°C from date of shipment. For maximum recovery of product, centrifuge the original vial after thawing and prior to removing the cap. Aliquot to avoid repeated freezing and thawing. Aliquot will be stable at 4°C for 3 months.

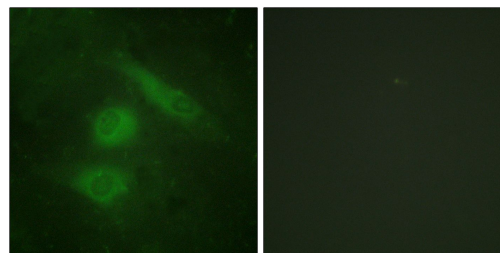
## Images



Peptide - +  
Immunohistochemistry analysis of paraffin-embedded human lung carcinoma tissue, using IRF-3 (Ab-385) antibody.



Peptide - +  
Western blot analysis of extracts from K562 cells, using IRF-3 (Ab-385) antibody.



Peptide - +  
Immunofluorescence analysis of HeLa cells, using IRF-3 (Ab-385) antibody.