

# Anti-PECAM-1 (Ab-713) Polyclonal Antibody



<u>Catalog No.</u>	<u>Size</u>
A200059-01	50 µl
A200059-02	100 µl

<b>Specificity</b>	Anti-PECAM-1 (Ab-713) (human mouse )
<b>Source</b>	Rabbit Polyclonal
<b>Application</b>	WB ELISA IHC IF
<b>Form</b>	Liquid, 1 mg/ml

## Product

**Swiss-Prot No.:** P16284

**Other Names:** CD31, CD31 antigen, EndoCAM, PEC1, PECA1, PECAM, PECAM1, Platelet endothelial cell adhesion molecule

## Specificity and Sensitivity

PECAM-1 (Ab-713) antibody detects endogenous levels of total PECAM-1 protein.

## Source and Purification

The antiserum was produced against synthesized non-phosphopeptide derived from human PECAM-1 around the phosphorylation site of tyrosine 713 (T-V-Y<sup>P</sup>-S-E). The antibody was affinity-purified from rabbit antiserum by affinity-chromatography using epitope-specific immunogen.

## Application Notes

Optimal working dilutions should be determined experimentally by the investigator. Suggested starting dilutions are as follows:

WB: 1:500~1:3000      IHC: 1:50~1:100

IF: 1:100~1:500      ELISA: 1:20000

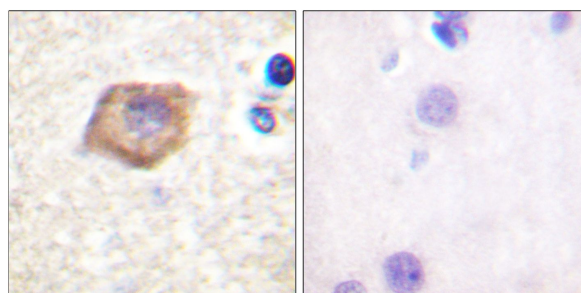
## Storage Buffer

Rabbit IgG in phosphate buffered saline (without Mg<sup>2+</sup> and Ca<sup>2+</sup>), pH 7.4, 150mM NaCl, 0.02% sodium azide and 50% glycerol.

## Storage Instructions

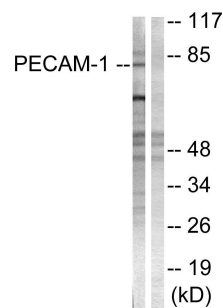
Stable for 1 year at -20°C from date of shipment. For maximum recovery of product, centrifuge the original vial after thawing and prior to removing the cap. Aliquot to avoid repeated freezing and thawing. Aliquot will be stable at 4°C for 3 months.

## Images



Peptide      -      +

Immunohistochemistry analysis of paraffin-embedded human brain tissue, using PECAM-1 (Ab-713) antibody.



Peptide      -      +

Western blot analysis of extracts from Jurkat cells, using PECAM-1 (Ab-713) antibody.