

Anti-Raf1 (Ab-621) Polyclonal Antibody



Catalog No.	Size
A200062-01	50 µl
A200062-02	100 µl

Specificity	Anti-Raf1 (Ab-621) (human mouse rat)
Source	Rabbit Polyclonal
Application	WB ELISA IHC IF
Form	Liquid, 1 mg/ml

Product

Swiss-Prot No.: P04049

Other Names: s C-RAF, C-Raf, CRAF, EC 2.7.11.1, Protein kinase raf 1, RAF proto-oncogene serine/threonine-protein kinase, RAF-1, RAF1, Raf proto-oncogene serine/threonine-protein kinase, Raf-1, Similar to murine leukemia viral (V-raf-1) oncogene homolog 1, kinase Raf1

Specificity and Sensitivity

Raf1 (Ab-621) antibody detects endogenous levels of total RAF1 protein.

Source and Purification

The antiserum was produced against synthesized non-phosphopeptide derived from human RAF1 around the phosphorylation site of serine 621 (S-A-S-E-P).

The antibody was affinity-purified from rabbit antiserum by affinity-chromatography using epitope-specific immunogen.

Application Notes

Optimal working dilutions should be determined experimentally by the investigator. Suggested starting dilutions are as follows:

WB: 1:500~1:3000 IHC: 1:50~1:100

IF: 1:100~1:500 ELISA: 1:1000

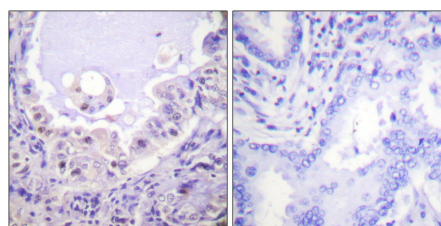
Storage Buffer

Rabbit IgG in phosphate buffered saline (without Mg²⁺ and Ca²⁺), pH 7.4, 150mM NaCl, 0.02% sodium azide and 50% glycerol.

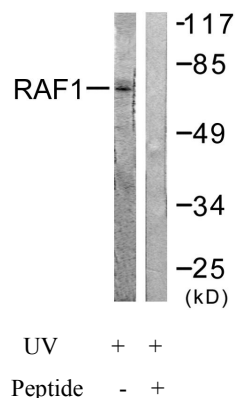
Storage Instructions

Stable for 1 year at -20°C from date of shipment. For maximum recovery of product, centrifuge the original vial after thawing and prior to removing the cap. Aliquot to avoid repeated freezing and thawing. Aliquot will be stable at 4°C for 3 months.

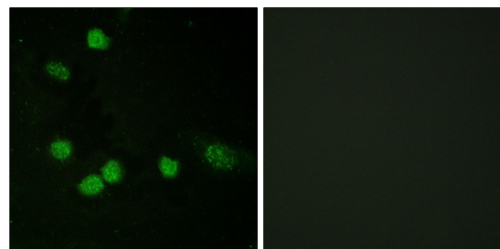
Images



Peptide - +
Immunohistochemistry analysis of paraffin-embedded human lung carcinoma tissue using Raf1 (Ab-621) antibody.



Western blot analysis of extracts from HeLa cells, treated with UV (5mins), using Raf1 (Ab-621) antibody.



Peptide - +
Immunofluorescence analysis of HeLa cells, using Raf1 (Ab-621) antibody.