

# Anti-Ras-GRF1 Polyclonal Antibody



Catalog No.	Size
A200073-01	50 $\mu$ l
A200073-02	100 $\mu$ l

Specificity	Anti-Ras-GRF1 (human mouse rat)
Source	Rabbit Polyclonal
Application	ELISA IHC
Form	Liquid, 1 mg/ml

## Product

**Swiss-Prot No.:** Q13972

**Other Names:** CDC25, GNRP, GRF1, Guanine nucleotide releasing protein, P140 Ras-GRF, RASGRF1, Ras-specific nucleotide exchange factor CDC25

## Specificity and Sensitivity

Ras-GRF1 antibody detects endogenous levels of total Ras-GRF1 protein.

## Source and Purification

The antiserum was produced against synthesized peptide derived from Internal of human Ras-GRF1.

The antibody was affinity-purified from rabbit antiserum by affinity-chromatography using epitope-specific immunogen.

## Application Notes

Optimal working dilutions should be determined experimentally by the investigator. Suggested starting dilutions are as follows:

IHC: 1:50~1:100    ELISA: 1:1000

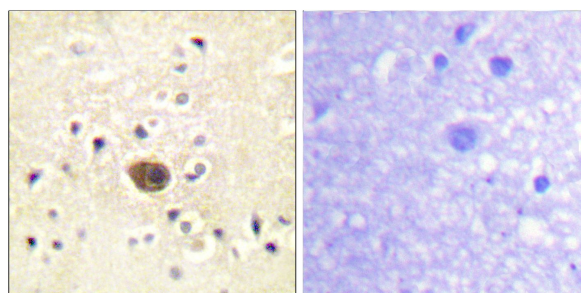
## Storage Buffer

Rabbit IgG in phosphate buffered saline (without  $Mg^{2+}$  and  $Ca^{2+}$ ), pH 7.4, 150mM NaCl, 0.02% sodium azide and 50% glycerol.

## Storage Instructions

Stable for 1 year at  $-20^{\circ}C$  from date of shipment. For maximum recovery of product, centrifuge the original vial after thawing and prior to removing the cap. Aliquot to avoid repeated freezing and thawing. Aliquot will be stable at  $4^{\circ}C$  for 3 months.

## Images



Peptide          -    +  
Immunohistochemistry analysis of paraffin-embedded human brain tissue using Ras-GRF1 antibody.