

Anti-14-3-3 ζ/δ (Ab-232) Polyclonal Antibody



<u>Catalog No.</u>	<u>Size</u>
A200074-01	50 μ l
A200074-02	100 μ l

Specificity	Anti-14-3-3 ζ/δ (Ab-232) (human mouse)
Source	Rabbit Polyclonal
Application	WB ELISA IHC IF
Form	Liquid, 1 mg/ml

Product

Swiss-Prot No.: P63104

Other Names: 14-3-3 protein zeta/delta, 1433Z, 143Z, FAS, Factor activating exoenzyme S, KCIP-1, Mitochondrial import stimulation factor S1 subunit, Protein kinase C inhibitor protein-1, YWHAZ

Specificity and Sensitivity

14-3-3 ζ/δ (Ab-232) antibody detects endogenous levels of total 14-3-3 ζ/δ protein.

Source and Purification

The antiserum was produced against synthesized non-phosphopeptide derived from human 14-3-3 ζ/δ around the phosphorylation site of threonine 232 (S-D-T^P-Q-G).

The antibody was affinity-purified from rabbit antiserum by affinity-chromatography using epitope-specific immunogen.

Application Notes

Optimal working dilutions should be determined experimentally by the investigator. Suggested starting dilutions are as follows:

WB: 1:500~1:3000 IHC: 1:50~1:100

IF: 1:100~1:500 ELISA: 1:10000

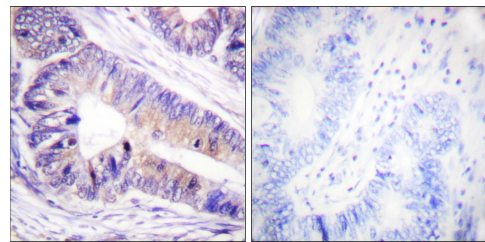
Storage Buffer

Rabbit IgG in phosphate buffered saline (without Mg²⁺ and Ca²⁺), pH 7.4, 150mM NaCl, 0.02% sodium azide and 50% glycerol.

Storage Instructions

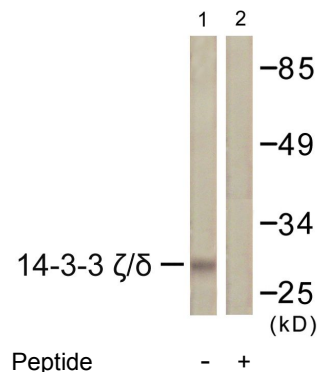
Stable for 1 year at -20°C from date of shipment. For maximum recovery of product, centrifuge the original vial after thawing and prior to removing the cap. Aliquot to avoid repeated freezing and thawing. Aliquot will be stable at 4°C for 3 months.

Images

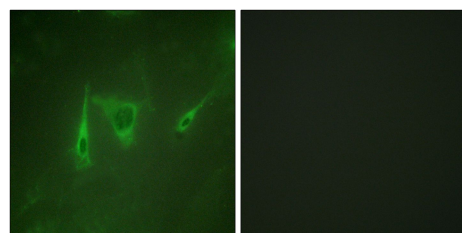


Peptide - +

Immunohistochemistry analysis of paraffin-embedded human colon carcinoma tissue using 14-3-3 ζ/δ (Ab-232) antibody.



Western blot analysis of extracts from K562 cells, using 14-3-3 ζ/δ (Ab-232) antibody.



Peptide - +

Immunofluorescence analysis of NIH/3T3 cells, using 14-3-3 ζ/δ (Ab-232) antibody.