

Anti- C/EBP-ε (Ab-74) Polyclonal Antibody



<u>Catalog No.</u>	<u>Size</u>
A200086-01	50 µl
A200086-02	100 µl

Specificity	Anti-C/EBP-ε (Ab-74) (human)
Source	Rabbit Polyclonal
Application	WB IHC ELISA IF
Form	Liquid, 1 mg/ml

Product

Swiss-Prot No.: Q15744

Other Names: C/EBP epsilon, CCAAT/enhancer binding protein epsilon, CEBPE

Specificity and Sensitivity

C/EBP-ε (Ab-74) antibody detects endogenous levels of total C/EBP-ε protein.

Source and Purification

The antiserum was produced against synthesized non-phosphopeptide derived from human C/EBP-ε around the phosphorylation site of threonine 74 (P-G-T^P-P-A). The antibody was affinity-purified from rabbit antiserum by affinity-chromatography using epitope-specific immunogen.

Application Notes

Optimal working dilutions should be determined experimentally by the investigator. Suggested starting dilutions are as follows:

WB: 1:500~1:3000 IHC: 1:50~1:100

IF: 1:100~1:500 ELISA: 1:1000

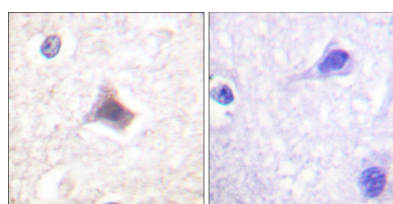
Storage Buffer

Rabbit IgG in phosphate buffered saline (without Mg²⁺ and Ca²⁺), pH 7.4, 150mM NaCl, 0.02% sodium azide and 50% glycerol.

Storage Instructions

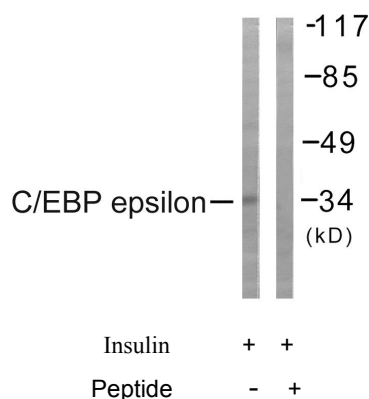
Stable for 1 year at -20°C from date of shipment. For maximum recovery of product, centrifuge the original vial after thawing and prior to removing the cap. Aliquot to avoid repeated freezing and thawing. Aliquot will be stable at 4°C for 3 months.

Images

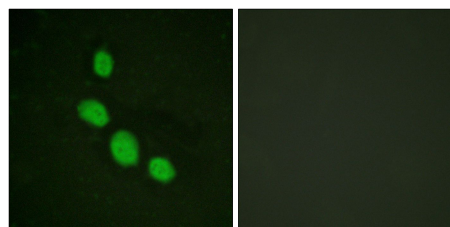


Peptide - +

Immunohistochemistry analysis of paraffin-embedded human brain tissue using C/EBP-ε (Ab-74) antibody.



Western blot analysis of extracts from HuvEc cells, treated with Insulin (0.01U/ml, 15mins), using C/EBP-ε (Ab-74) antibody.



Peptide - +

Immunofluorescence analysis of HeLa cells, using C/EBP-ε (Ab-74) antibody.