

Anti- RFA2 (Ab-21) Polyclonal Antibody



<u>Catalog No.</u>	<u>Size</u>
A200097-01	50 µl
A200097-02	100 µl

Specificity	Anti-RFA2 (Ab-21) (human mouse)
Source	Rabbit Polyclonal
Application	WB ELISA IHC IF
Form	Liquid, 1 mg/ml

Product

Swiss-Prot No.: P15927

Other Names: REPA2, RF-A, RP-A, RPA2, RPA32, replication factor-A protein 2, replication protein A 32 kDa subunit, replication protein A2

Specificity and Sensitivity

RFA2 (Ab-21) antibody detects endogenous levels of total RFA2 protein.

Source and Purification

The antiserum was produced against synthesized non-phosphopeptide derived from human RFA2 around the phosphorylation site of threonine 21 (G-Y-T^P-Q-S).

The antibody was affinity-purified from rabbit antiserum by affinity-chromatography using epitope-specific immunogen.

Application Notes

Optimal working dilutions should be determined experimentally by the investigator. Suggested starting dilutions are as follows:

WB: 1:500~1:3000 IHC: 1:50~1:100

IF: 1:100~1:500 ELISA: 1:1000

Storage Buffer

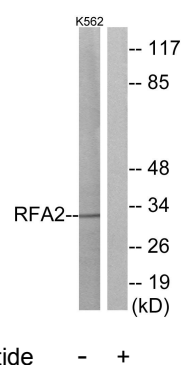
Rabbit IgG in phosphate buffered saline (without Mg²⁺ and Ca²⁺), pH 7.4, 150mM NaCl, 0.02% sodium azide and 50%

glycerol.

Storage Instructions

Stable for 1 year at -20°C from date of shipment. For maximum recovery of product, centrifuge the original vial after thawing and prior to removing the cap. Aliquot to avoid repeated freezing and thawing. Aliquot will be stable at 4°C for 3 months.

Images



Western blot analysis of extracts from K562 cells, using RFA2 (Ab-21) antibody.