

Anti-Gz- α (Ab-16) Polyclonal Antibody



<u>Catalog No.</u>	<u>Size</u>
A200102-01	50 μ l
A200102-02	100 μ l

Specificity	Anti-Gz- α (Ab-16) (human mouse)
Source	Rabbit Polyclonal
Application	WB ELISA IHC
Form	Liquid, 1 mg/ml

Product

Swiss-Prot No.: P19086

Other Names: G(x) alpha; GNAZ; guanine nucleotide binding protein (G protein) alpha z; guanine nucleotide-binding protein G(z), alpha; Gz-alpha

Specificity and Sensitivity

Gz- α (Ab-16) antibody detects endogenous levels of total Gz- α protein.

Source and Purification

The antiserum was produced against synthesized non-phosphopeptide derived from human Gz- α around the phosphorylation site of serine 16 (R-R-S^P-R-R).

The antibody was affinity-purified from rabbit antiserum by affinity-chromatography using epitope-specific immunogen.

Application Notes

Optimal working dilutions should be determined experimentally by the investigator. Suggested starting dilutions are as follows:

WB: 1:500~1:3000 IHC: 1:50~1:100 ELISA: 1:5000

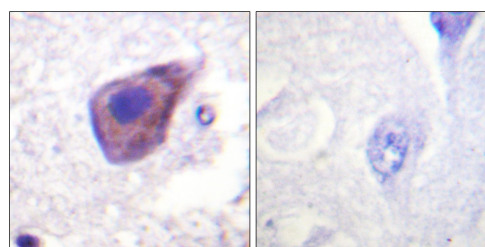
Storage Buffer

Rabbit IgG in phosphate buffered saline (without Mg²⁺ and Ca²⁺), pH 7.4, 150mM NaCl, 0.02% sodium azide and 50% glycerol.

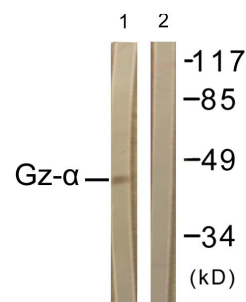
Storage Instructions

Stable for 1 year at -20°C from date of shipment. For maximum recovery of product, centrifuge the original vial after thawing and prior to removing the cap. Aliquot to avoid repeated freezing and thawing. Aliquot will be stable at 4°C for 3 months.

Images



Peptide - +
Immunohistochemistry analysis of paraffin-embedded human brain tissue using Gz- α (Ab-16) antibody.



Peptide - +
Western blot analysis of extracts from HuvEc cells, using Gz- α (Ab-16) antibody.