

Anti-IL- ITGB4 (Ab-1510) Polyclonal Antibody



| <u>Catalog No.</u> | <u>Size</u> |
|--------------------|-------------|
| A200105-01 | 50 µl |
| A200105-02 | 100 µl |

| | |
|--------------------|--|
| Specificity | Anti-ITGB4 (Ab-1510) (human mouse rat) |
| Source | Rabbit Polyclonal |
| Application | WB ELISA IHC |
| Form | Liquid, 1 mg/ml |

Product

Swiss-Prot No.: P16144

Other Names: CD104 antigen, GP150, ITB4, integrin beta-4, integrin beta-4C

Specificity and Sensitivity

ITGB4 (Ab-1510) antibody detects endogenous levels of total ITGB4 protein.

Source and Purification

The antiserum was produced against synthesized non-phosphopeptide derived from human ITGB4 around the phosphorylation site of tyrosine 1510 (R-D-Y^P-S-T).

The antibody was affinity-purified from rabbit antiserum by affinity-chromatography using epitope-specific immunogen.

Application Notes

Optimal working dilutions should be determined experimentally by the investigator. Suggested starting dilutions are as follows:

WB: 1:500~1:3000 IHC: 1:50~1:100 ELISA: 1:5000

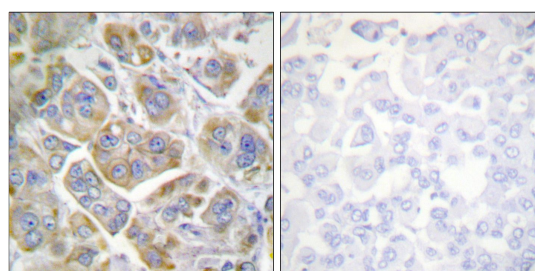
Storage Buffer

Rabbit IgG in phosphate buffered saline (without Mg²⁺ and Ca²⁺), pH 7.4, 150mM NaCl, 0.02% sodium azide and 50% glycerol.

Storage Instructions

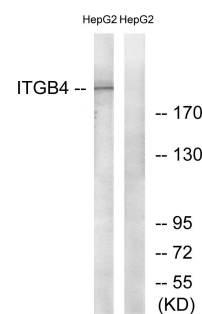
Stable for 1 year at -20°C from date of shipment. For maximum recovery of product, centrifuge the original vial after thawing and prior to removing the cap. Aliquot to avoid repeated freezing and thawing. Aliquot will be stable at 4°C for 3 months.

Images



Peptide - +

Immunohistochemistry analysis of paraffin-embedded human breast carcinoma tissue using ITGB4 (Ab-1510) antibody.



PMA + +

Peptide - +

Western blot analysis of extracts from HepG2 cells, treated with PMA (125ng/ml, 30mins), using ITGB4 (Ab-1510) antibody.