

Anti-Kir5.1 (Ab-416) Polyclonal Antibody



<u>Catalog No.</u>	<u>Size</u>
A200106-01	50 µl
A200106-02	100 µl

Specificity	Anti-Kir5.1 (Ab-416) (human mouse rat)
Source	Rabbit Polyclonal
Application	WB ELISA IHC IF
Form	Liquid, 1 mg/ml

Product

Swiss-Prot No.: Q9NPI9

Other Names: Inward rectifier K channel Kir5.1; IRK16; IRKG; KCNJ16; Potassium channel, inwardly rectifying, subfamily J, member 16

Specificity and Sensitivity

Kir5.1 (Ab-416) antibody detects endogenous levels of total Kir5.1 protein.

Source and Purification

The antiserum was produced against synthesized non-phosphopeptide derived from human Kir5.1 around the phosphorylation site of serine 416 (M-E-S^P-Q-M).

The antibody was affinity-purified from rabbit antiserum by affinity-chromatography using epitope-specific immunogen.

Application Notes

Optimal working dilutions should be determined experimentally by the investigator. Suggested starting dilutions are as follows:

WB: 1:500~1:3000 IHC: 1:50~1:100

IF: 1:100~1:500 ELISA: 1:10000

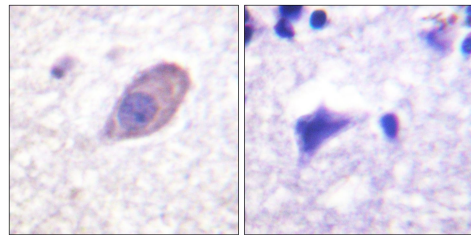
Storage Buffer

Rabbit IgG in phosphate buffered saline (without Mg²⁺ and Ca²⁺), pH 7.4, 150mM NaCl, 0.02% sodium azide and 50% glycerol.

Storage Instructions

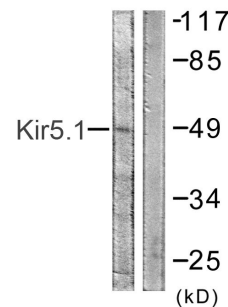
Stable for 1 year at -20°C from date of shipment. For maximum recovery of product, centrifuge the original vial after thawing and prior to removing the cap. Aliquot to avoid repeated freezing and thawing. Aliquot will be stable at 4°C for 3 months.

Images



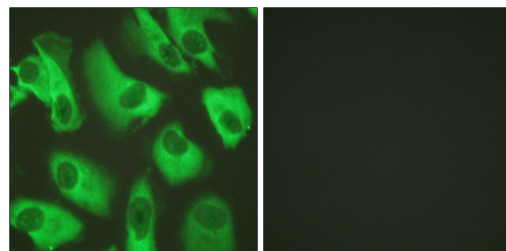
P-peptide - +

Immunohistochemistry analysis of paraffin-embedded human brain tissue using Kir5.1 (Ab-416) antibody.



P-peptide - +

Western blot analysis of extracts from HeLa cells, using Kir5.1 (Ab-416) antibody.



Peptide - +

Immunofluorescence analysis of HeLa cells, using Kir5.1 (Ab-416) antibody.