

Anti-MARK1/2/3/4 (Ab-215) Polyclonal Antibody



<u>Catalog No.</u>	<u>Size</u>
A200108-01	50 µl
A200108-02	100 µl

Specificity	Anti-MARK1/2/3/4 (Ab-215) (human mouse rat)
Source	Rabbit Polyclonal
Application	WB ELISA IHC IF
Form	Liquid, 1 mg/ml

Product

Swiss-Prot No.: Q9P0L2

Other Names: EC 2.7.11.1; MAP/microtubule affinity-regulating kinase 1; MARK

Specificity and Sensitivity

MARK1/2/3/4 (Ab-215) antibody detects endogenous levels of total MARK1/2/3/4 protein.

Source and Purification

The antiserum was produced against synthesized non-phosphopeptide derived from human MARK1/2/3/4 around the phosphorylation site of threonine 215 (L-D-T^P-F-C).

The antibody was affinity-purified from rabbit antiserum by affinity-chromatography using epitope-specific immunogen.

Application Notes

Optimal working dilutions should be determined experimentally by the investigator. Suggested starting dilutions are as follows:

WB: 1:500~1:3000 IHC: 1:50~1:100

IF: 1:100~1:500 ELISA: 1:1000

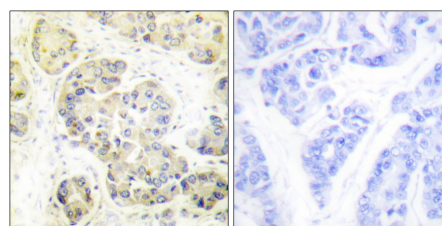
Storage Buffer

Rabbit IgG in phosphate buffered saline (without Mg²⁺ and Ca²⁺), pH 7.4, 150mM NaCl, 0.02% sodium azide and 50% glycerol.

Storage Instructions

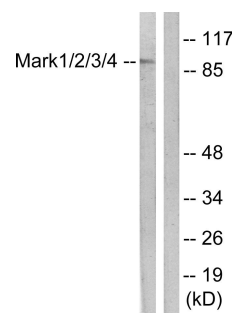
Stable for 1 year at -20°C from date of shipment. For maximum recovery of product, centrifuge the original vial after thawing and prior to removing the cap. Aliquot to avoid repeated freezing and thawing. Aliquot will be stable at 4°C for 3 months.

Images



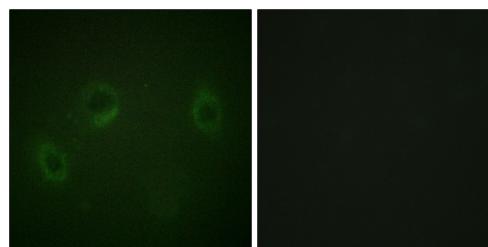
Peptide - +

Immunohistochemistry analysis of paraffin-embedded human breast carcinoma tissue using MARK1/2/3/4 (Ab-215) antibody.



Peptide - +

Western blot analysis of extracts from COS-7 cells, using MARK1/2/3/4 (Ab-215) antibody.



Peptide - +

Immunofluorescence analysis of HeLa cells, using MARK1/2/3/4 (Ab-215) antibody.