

Anti-ATP1 α 1/Na+K+ ATPase1 (Ab-23) Polyclonal Antibody



<u>Catalog No.</u>	<u>Size</u>
A200114-01	50 μ l
A200114-02	100 μ l

Specificity	Anti-ATP1 α 1/Na+K+ ATPase1 (Ab-23) (human rat)
Source	Rabbit Polyclonal
Application	WB ELISA IF
Form	Liquid, 1 mg/ml

Product

Swiss-Prot No.: P06685

Other Names: A1A1; AT1A1; ATPase, Na+/K+ transporting, alpha 1 polypeptide; EC 3.6.3.9; Hypothetical protein MGC38419; Na+/K+ ATPase 1; Na,K-ATPase 1; Sodium pump 1; Sodium/potassium-transporting ATPase alpha-1 chain precursor

Specificity and Sensitivity

ATP1 α 1/Na+K+ ATPase1 (Ab-23) antibody detects endogenous levels of total ATP1 α 1/Na+K+ ATPase1 protein.

Source and Purification

The antiserum was produced against synthesized non-phosphopeptide derived from human ATP1 α 1/Na+K+ ATPase1 around the phosphorylation site of serine 23 (K-K-S^P-K-K).

The antibody was affinity-purified from rabbit antiserum by affinity-chromatography using epitope-specific immunogen.

Application Notes

Optimal working dilutions should be determined experimentally by the investigator. Suggested starting dilutions are as follows:

WB: 1:500~1:3000 IF: 1:100~1:500 ELISA: 1:40000

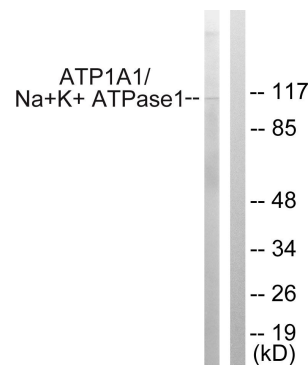
Storage Buffer

Rabbit IgG in phosphate buffered saline (without Mg²⁺ and Ca²⁺), pH 7.4, 150mM NaCl, 0.02% sodium azide and 50% glycerol.

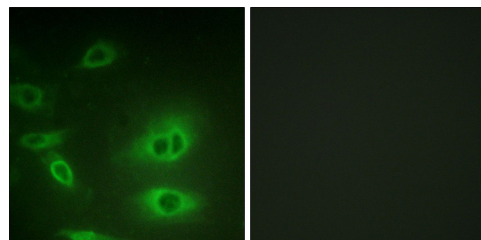
Storage Instructions

Stable for 1 year at -20°C from date of shipment. For maximum recovery of product, centrifuge the original vial after thawing and prior to removing the cap. Aliquot to avoid repeated freezing and thawing. Aliquot will be stable at 4°C for 3 months.

Images



Western blot analysis of extracts from HeLa cells, using ATP1 α 1/Na+K+ ATPase1 (Ab-23) antibody.



Immunofluorescence analysis of HeLa cells, using ATP1 α 1/Na+K+ ATPase1 (Ab-23) antibody.