

Anti-TISB (Ab-92) Polyclonal Antibody



Catalog No.	Size
A200123-01	50 µl
A200123-02	100 µl

Specificity	Anti-TISB (Ab-92) (human mouse)
Source	Rabbit Polyclonal
Application	WB ELISA IHC
Form	Liquid, 1 mg/ml

Product

Swiss-Prot No.: Q07352

Other Names: BERG36; Butyrate response factor 1; EGF-response factor 1; ERF-1; ERF1; TIS11B; TIS11B protein; TISB; ZFP36L1

Specificity and Sensitivity

TISB (Ab-92) antibody detects endogenous levels of total TISB protein.

Source and Purification

The antiserum was produced against synthesized non-phosphopeptide derived from human TISB around the phosphorylation site of serine 92 (S-F-S^p-E-G). The antibody was affinity-purified from rabbit antiserum by affinity-chromatography using epitope-specific immunogen.

Application Notes

Optimal working dilutions should be determined experimentally by the investigator. Suggested starting dilutions are as follows:

WB: 1:500~1:3000 IHC: 1:50~1:100 ELISA: 1:10000

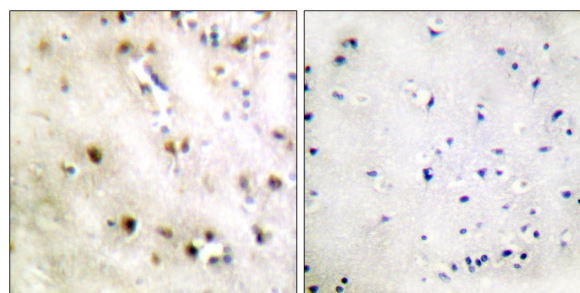
Storage Buffer

Rabbit IgG in phosphate buffered saline (without Mg²⁺ and Ca²⁺), pH 7.4, 150mM NaCl, 0.02% sodium azide and 50% glycerol.

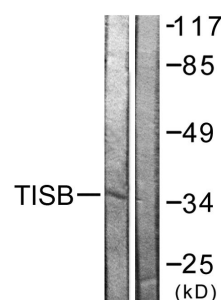
Storage Instructions

Stable for 1 year at -20°C from date of shipment. For maximum recovery of product, centrifuge the original vial after thawing and prior to removing the cap. Aliquot to avoid repeated freezing and thawing. Aliquot will be stable at 4°C for 3 months.

Images



Peptide - +
Immunohistochemistry analysis of paraffin-embedded human brain tissue using TISB (Ab-92) antibody.



Peptide - +
Western blot analysis of extracts from Jurkat cells, using TISB (Ab-92) antibody.