

Anti-BRCA1 (Ab-1423) Polyclonal Antibody



<u>Catalog No.</u>	<u>Size</u>
A200128-01	50 μ l
A200128-02	100 μ l

Specificity	Anti-BRCA1 (Ab-1423) (human)
Source	Rabbit Polyclonal
Application	ELISA IHC
Form	Liquid, 1 mg/ml

Product

Swiss-Prot No.: P38398

Other Names: BRCA1, Breast cancer type 1 susceptibility protein.

Specificity and Sensitivity

BRCA1 (Ab-1423) antibody detects endogenous levels of total BRCA1 protein.

Source and Purification

The antiserum was produced against synthesized non-phosphopeptide derived from human BRCA1 around the phosphorylation site of serine 1423 (H-G-S^P-Q-P).

The antibody was affinity-purified from rabbit antiserum by affinity-chromatography using epitope-specific immunogen.

Application Notes

Optimal working dilutions should be determined experimentally by the investigator. Suggested starting dilutions are as follows:

IHC: 1:50~1:100 ELISA: 1:4000

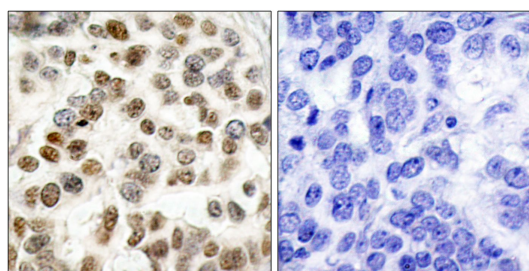
Storage Buffer

Rabbit IgG in phosphate buffered saline (without Mg²⁺ and Ca²⁺), pH 7.4, 150mM NaCl, 0.02% sodium azide and 50% glycerol.

Storage Instructions

Stable for 1 year at -20°C from date of shipment. For maximum recovery of product, centrifuge the original vial after thawing and prior to removing the cap. Aliquot to avoid repeated freezing and thawing. Aliquot will be stable at 4°C for 3 months.

Images



Peptide - +
Immunohistochemical analysis of paraffin-embedded human breast carcinoma tissue, using BRCA1 (Ab-1423) antibody.