

Anti-Chk1 (Ab-280) Polyclonal Antibody



<u>Catalog No.</u>	<u>Size</u>
A200130-01	50 μ l
A200130-02	100 μ l

Specificity	Anti-Chk1 (Ab-280) (human)
Source	Rabbit Polyclonal
Application	WB ELISA
Form	Liquid, 1 mg/ml

Product

Swiss-Prot No.: O14757

Specificity and Sensitivity

Chk1 (Ab-280) Antibody detects endogenous levels of total Chk1 protein.

Source and Purification

This antiserum was produced against synthesized non-phosphopeptide derived from human Chk1 around the phosphorylation site of Serine 280.

The antibody was affinity-purified from rabbit antiserum by affinity-chromatography using epitope-specific immunogen.

Application Notes

Optimal working dilutions should be determined experimentally by the investigator. Suggested starting dilutions are as follows:

WB: 1:500~1:3000 ELISA: 1:10000

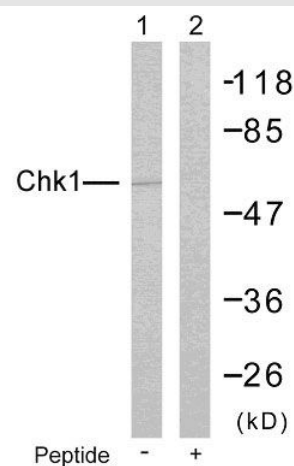
Storage Buffer

Rabbit IgG in phosphate buffered saline (without Mg^{2+} and Ca^{2+}), pH 7.4, 150mM NaCl, 0.02% sodium azide and 50% glycerol.

Storage Instructions

Stable for 1 year at $-20^{\circ}C$ from date of shipment. For maximum recovery of product, centrifuge the original vial after thawing and prior to removing the cap. Aliquot to avoid repeated freezing and thawing. Aliquot will be stable at $4^{\circ}C$ for 3 months.

Images



Western blot analysis of extracts from HeLa cells: Line1: Using Chk1 (Ab-280) Antibody; Line2: The same antibody preincubated with synthesized peptide.