

# Anti-Chk1 (Ab-317) Polyclonal Antibody



<u>Catalog No.</u>	<u>Size</u>
A200131-01	50 µl
A200131-02	100 µl

<b>Specificity</b>	Anti-Chk1 (Ab-317) (human rat)
<b>Source</b>	Rabbit Polyclonal
<b>Application</b>	WB ELISA IHC
<b>Form</b>	Liquid, 1 mg/ml

## Product

Swiss-Prot No.: O14757

## Specificity and Sensitivity

Chk1 (Ab-317) antibody detects endogenous levels of Chk1 protein around serine 317.

## Source and Purification

The antiserum was produced against synthesized non-phosphopeptide derived from human Chk1 around the phosphorylation site of serine 317.

The antibody was affinity-purified from rabbit antiserum by affinity-chromatography using epitope-specific immunogen.

## Application Notes

Optimal working dilutions should be determined experimentally by the investigator. Suggested starting dilutions are as follows:

WB: 1:500~1:3000 IHC:1:50~1:100 ELISA: 1:10000

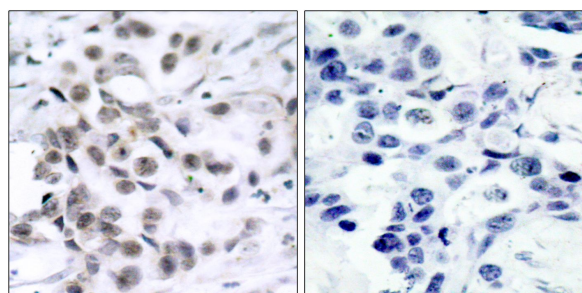
## Storage Buffer

Rabbit IgG in phosphate buffered saline (without Mg<sup>2+</sup> and Ca<sup>2+</sup>), pH 7.4, 150mM NaCl, 0.02% sodium azide and 50% glycerol.

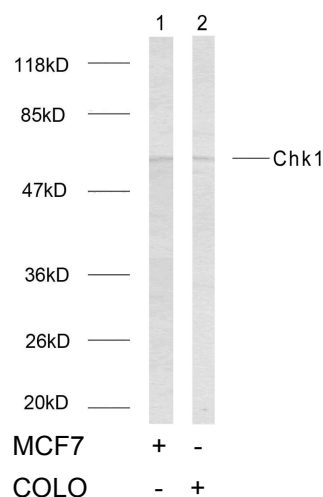
## Storage Instructions

Stable for 1 year at -20°C from date of shipment. For maximum recovery of product, centrifuge the original vial after thawing and prior to removing the cap. Aliquot to avoid repeated freezing and thawing. Aliquot will be stable at 4°C for 3 months.

## Images



Peptide - +  
Immunohistochemical analysis of paraffin-embedded human breast carcinoma tissue using Chk1 (Ab-317) antibody.



Western blot analysis using Chk1 (Ab-317) antibody.