

# Anti-Chk2 (Ab-68) Polyclonal Antibody



<u>Catalog No.</u>	<u>Size</u>
A200132-01	50 µl
A200132-02	100 µl

<b>Specificity</b>	Anti-Chk2 (Ab-68) (human mouse rat)
<b>Source</b>	Rabbit Polyclonal
<b>Application</b>	WB ELISA IHC
<b>Form</b>	Liquid, 1 mg/ml

## Product

Swiss-Prot No.: O96017

## Specificity and Sensitivity

Chk2 (Ab-68) antibody detects endogenous levels of total Chk2 protein.

## Source and Purification

The antiserum was produced against synthesized non-phosphopeptide derived from human Chk2 around the phosphorylation site of threonine 68.

The antibody was affinity-purified from rabbit antiserum by affinity-chromatography using epitope-specific immunogen.

## Application Notes

Optimal working dilutions should be determined experimentally by the investigator. Suggested starting dilutions are as follows:

WB: 1:500~1:3000 IHC:1:50~1:100 ELISA: 1:10000

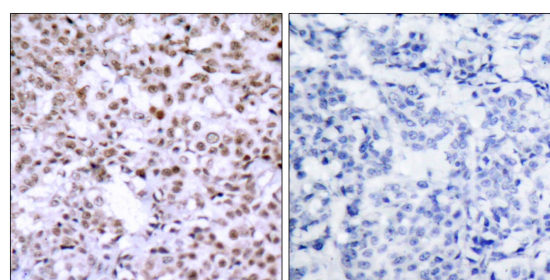
## Storage Buffer

Rabbit IgG in phosphate buffered saline (without Mg<sup>2+</sup> and Ca<sup>2+</sup>), pH 7.4, 150mM NaCl, 0.02% sodium azide and 50% glycerol.

## Storage Instructions

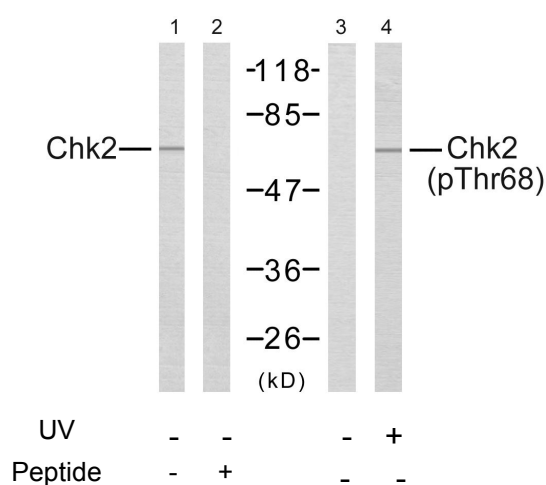
Stable for 1 year at -20°C from date of shipment. For maximum recovery of product, centrifuge the original vial after thawing and prior to removing the cap. Aliquot to avoid repeated freezing and thawing. Aliquot will be stable at 4°C for 3 months.

## Images



Peptide - +

Immunohistochemical analysis of paraffin-embedded human breast carcinoma tissue using Chk2 (Ab-68) antibody.



Western blot analysis of the extracts from Jurkat cells using Chk2 (Ab-68) antibody (Line 1 and 2) and Chk2 (phospho-Thr68) antibody (Line 3 and 4).