

Anti- CREB (Ab-129/133) Polyclonal Antibody



Catalog No.	Size
A200134-01	50µl
A200134-02	100µl

Specificity	Anti- CREB (Ab-129/133) (Human; Mouse, Rat)
Source	Rabbit Polyclonal
Application	ELISA IHC WB
Form	Liquid, 1 mg/ml

Background Information

Swiss-Prot No.: P16220

Specificity and Sensitivity

CREB (Ab-129/133) antibody detects endogenous levels of total CREB protein.

Source and Purification

This antiserum was produced against synthesized non-phosphopeptide derived from human CREB around the phosphorylation site of serine 129 or serine 133(S-R-R-P-S). The antibody was affinity-purified from rabbit antiserum by affinity-chromatography using epitope-specific immunogen.

Application Notes

Optimal working dilutions should be determined experimentally by the investigator. Suggested starting dilutions are as follows:

WB: 1:500~1:3000 IHC: 1:50~1:100

ELISA: 1:20000

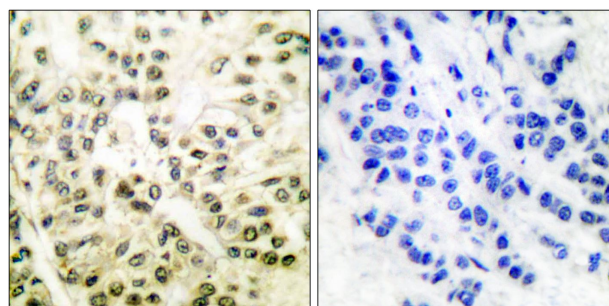
Storage Buffer

Rabbit IgG in phosphate buffered saline (without Mg²⁺ and Ca²⁺), pH 7.4, 150mM NaCl, 0.02% sodium azide and 50% glycerol.

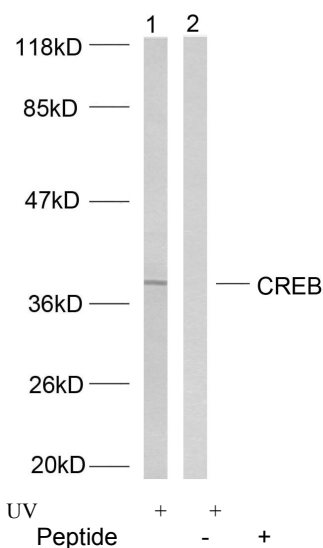
Storage Instructions

Stable for 1 year at -20°C from date of shipment. For maximum recovery of product, centrifuge the original vial after thawing and prior to removing the cap. Aliquot to avoid repeated freezing and thawing. Aliquot will be stable at 4°C for 3 months.

Images



Peptide - +
Immunohistochemical analysis of paraffin-embedded human breast carcinoma tissue, using CREB (Ab-129/133) antibody



Western blot analysis of extracts from HeLa cells treated with UV, using CREB (Ab-129/133) antibody