

Anti- Elk-1(Ab-383) Polyclonal Antibody



<u>Catalog No.</u>	<u>Size</u>
A200137-01	50 µl
A200137-02	100 µl

Specificity	Anti-Elk-1(Ab-383) (human mouse rat)
Source	Rabbit Polyclonal
Application	WB ELISA IHC IF IP
Form	Liquid, 1 mg/ml

Product

Swiss-Prot No.: P19419

Specificity and Sensitivity

Elk-1(Ab-383) Antibody detects endogenous levels of Elk-1 protein around Serine 383.

Source and Purification

This antiserum was produced against synthesized non-phosphopeptide derived from human Elk-1 around the phosphorylation site of Serine 383.

The antibody was affinity-purified from rabbit antiserum by affinity-chromatography using epitope-specific immunogen.

Application Notes

Optimal working dilutions should be determined experimentally by the investigator. Suggested starting dilutions are as follows:

WB: 1:500~1:3000 IHC: 1:50~1:100 ELISA: 1:10000

IP: Various Dilution IF: 1:100~1:500

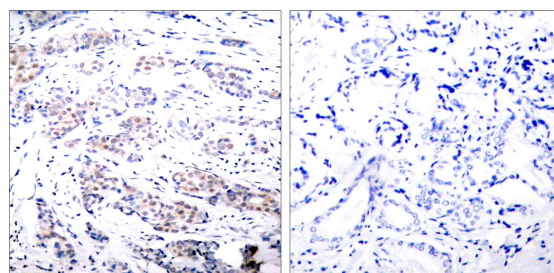
Storage Buffer

Rabbit IgG in phosphate buffered saline (without Mg²⁺ and Ca²⁺), pH 7.4, 150mM NaCl, 0.02% sodium azide and 50% glycerol.

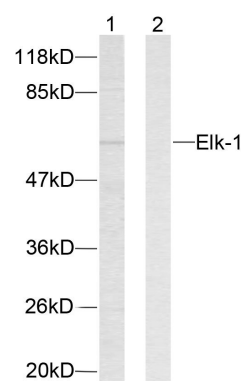
Storage Instructions

Stable for 1 year at -20°C from date of shipment. For maximum recovery of product, centrifuge the original vial after thawing and prior to removing the cap. Aliquot to avoid repeated freezing and thawing. Aliquot will be stable at 4°C for 3 months.

Images



Immunohistochemical analysis of paraffin- embedded breast carcinoma. Left: Using Elk-1 (Ab-383) Antibody; Right: Using the same antibody preincubated with synthesized peptide.



Western blot analysis of extracts from HeLa cells. Line1: Using Elk-1(Ab-383) Antibody ; Line2: Using the same antibody preincubated with synthesized peptide.