

Anti-FKHR (Ab-256) Polyclonal Antibody



Catalog No.	Size
A200138-01	50 µl
A200138-02	100 µl

Specificity	Anti-FKHR (Ab-256) (human mouse rat)
Source	Rabbit Polyclonal
Application	WB ELISA IHC
Form	Liquid, 1 mg/ml

Product

Swiss-Prot No.: Q12778

Specificity and Sensitivity

FKHR (Ab-256) antibody detects endogenous levels of total FKHR protein.

Source and Purification

The antiserum was produced against synthesized non-phosphopeptide derived from human FKHR around the phosphorylation site of serine 256.

The antibody was affinity-purified from rabbit antiserum by affinity-chromatography using epitope-specific immunogen.

Application Notes

Optimal working dilutions should be determined experimentally by the investigator. Suggested starting dilutions are as follows:

WB: 1:500~1:3000 IHC: 1:50~1:100 ELISA: 1:20000

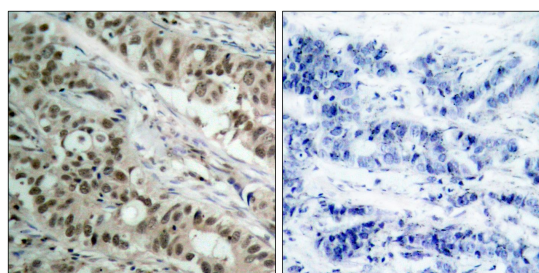
Storage Buffer

Rabbit IgG in phosphate buffered saline (without Mg²⁺ and Ca²⁺), pH 7.4, 150mM NaCl, 0.02% sodium azide and 50% glycerol.

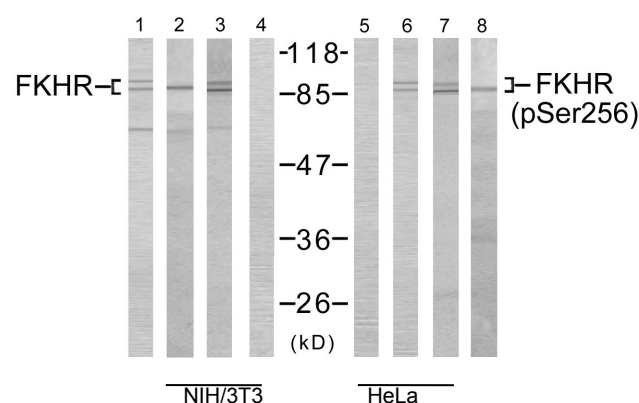
Storage Instructions

Stable for 1 year at -20°C from date of shipment. For maximum recovery of product, centrifuge the original vial after thawing and prior to removing the cap. Aliquot to avoid repeated freezing and thawing. Aliquot will be stable at 4°C for 3 months.

Images



Peptide - +
Immunohistochemical analysis of paraffin-embedded human breast carcinoma tissue using FKHR (Ab-256) antibody.



	NIH/3T3				HeLa			
Serum	-	-	+	+	-	-	+	-
EGF+Serum	+	-	-	-	-	-	-	+
P-peptide	-	-	-	-	+	-	-	-
Peptide	-	-	-	+	-	-	-	-

Western blot analysis using FKHR (Ab-256) antibody (Line 1, 2, 3 and 4) and FKHR (phospho- Ser256) antibody (Line 5, 6, 7 and 8).