

# Anti-IRS-1 (Ab-312) Polyclonal Antibody



<u>Catalog No.</u>	<u>Size</u>
A200142-01	50 µl
A200142-02	100 µl

<b>Specificity</b>	Anti-IRS-1 (Ab-312) (human mouse rat)
<b>Source</b>	Rabbit Polyclonal
<b>Application</b>	WB ELISA IHC IF
<b>Form</b>	Liquid, 1 mg/ml

## Product

**Swiss-Prot No.:** P35568

**Other Names:** Insulin receptor substrate-1; IRS-1; IRS1

## Specificity and Sensitivity

IRS-1 (Ab-312) antibody detects endogenous levels of total IRS-1 protein.

## Source and Purification

The antiserum was produced against synthesized non-phosphopeptide derived from human IRS-1 around the phosphorylation site of serine 312 (A-T-S<sup>P</sup>-P-A).

The antibody was affinity-purified from rabbit antiserum by affinity-chromatography using epitope-specific immunogen.

## Application Notes

Optimal working dilutions should be determined experimentally by the investigator. Suggested starting dilutions are as follows:

WB: 1:500~1:3000      IHC: 1:50~1:100

IF: 1:100~1:500      ELISA: 1:20000

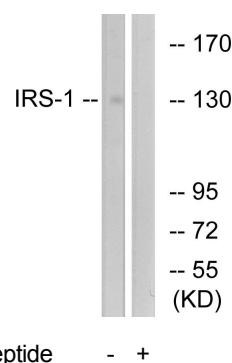
## Storage Buffer

Rabbit IgG in phosphate buffered saline (without Mg<sup>2+</sup> and Ca<sup>2+</sup>), pH 7.4, 150mM NaCl, 0.02% sodium azide and 50% glycerol.

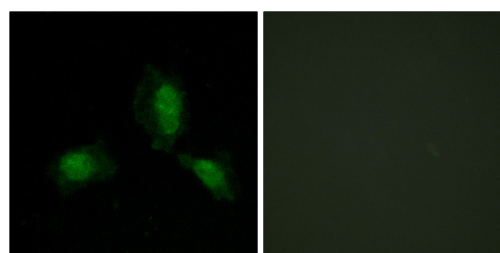
## Storage Instructions

Stable for 1 year at -20°C from date of shipment. For maximum recovery of product, centrifuge the original vial after thawing and prior to removing the cap. Aliquot to avoid repeated freezing and thawing. Aliquot will be stable at 4°C for 3 months.

## Images



Western blot analysis of extracts from 3T3 cells, using IRS-1 (Ab-312) antibody.



Immunofluorescence analysis of HeLa cells, using IRS-1 (Ab-312) antibody.