

Anti-JAK1 (Ab-1022) Polyclonal Antibody



| <u>Catalog No.</u> | <u>Size</u> |
|--------------------|-------------|
| A200144-01 | 50 µl |
| A200144-02 | 100 µl |

| | |
|--------------------|---------------------------------------|
| Specificity | Anti-JAK1 (Ab-1022) (human mouse rat) |
| Source | Rabbit Polyclonal |
| Application | WB ELISA IHC |
| Form | Liquid, 1 mg/ml |

Product

Swiss-Prot No.: P23458

Specificity and Sensitivity

JAK1 (Ab-1022) antibody detects endogenous levels of total JAK1 protein.

Source and Purification

The antiserum was produced against synthesized phosphopeptide derived from human JAK1 around the phosphorylation site of tyrosine 1022.

The antibody was affinity-purified from rabbit antiserum by affinity-chromatography using epitope-specific immunogen.

Application Notes

Optimal working dilutions should be determined experimentally by the investigator. Suggested starting dilutions are as follows:

WB: 1:500~1:3000 IHC: 1:50~1:100 ELISA: 1:10000

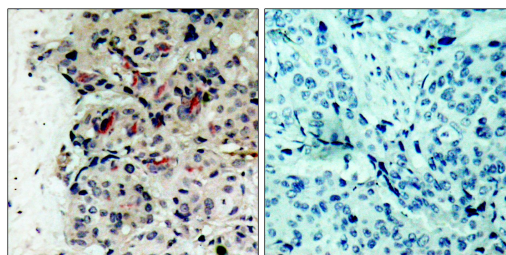
Storage Buffer

Rabbit IgG in phosphate buffered saline (without Mg²⁺ and Ca²⁺), pH 7.4, 150mM NaCl, 0.02% sodium azide and 50% glycerol.

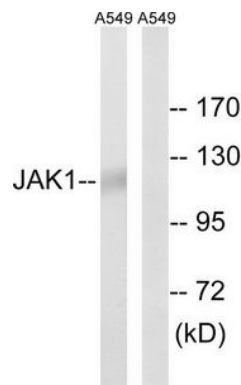
Storage Instructions

Stable for 1 year at -20°C from date of shipment. For maximum recovery of product, centrifuge the original vial after thawing and prior to removing the cap. Aliquot to avoid repeated freezing and thawing. Aliquot will be stable at 4°C for 3 months.

Images



Peptide - +
Immunohistochemical analysis of paraffin-embedded human breast carcinoma tissue, using JAK1 (Ab-1022) antibody.



Peptide - +
Western blot analysis of extracts from A549 cells, using JAK1 (Ab-1022) antibody.