

Anti-14-3-3 β/ζ (Ab-184/186) Polyclonal Antibody



Catalog No.	Size
A200169-01	50 μ l
A200169-02	100 μ l

Specificity	Anti-14-3-3 β/ζ (Ab-184/186) (human mouse rat)
Source	Rabbit Polyclonal
Application	WB ELISA
Form	Liquid, 1 mg/ml

Product

Swiss-Prot No.: P63104/P31946

Other Names: 14-3-3 protein zeta/delta; 1433Z; 143Z; Factor activating exoenzyme S; FAS; KCIP-1; Mitochondrial import stimulation factor S1 subunit; Protein kinase C inhibitor protein-1; YWHAZ

Specificity and Sensitivity

14-3-3 β/ζ (Ab-184/186) antibody detects endogenous levels of total 14-3-3 β/ζ protein.

Source and Purification

The antiserum was produced against synthesized non-phosphopeptide derived from human 14-3-3 β/ζ around the phosphorylation site of serine 184/186 (L-N-S^P-P-E).

The antibody was affinity-purified from rabbit antiserum by affinity-chromatography using epitope-specific immunogen.

Application Notes

Optimal working dilutions should be determined experimentally by the investigator. Suggested starting dilutions are as follows:

WB: 1:500~1:3000 ELISA: 1:20000

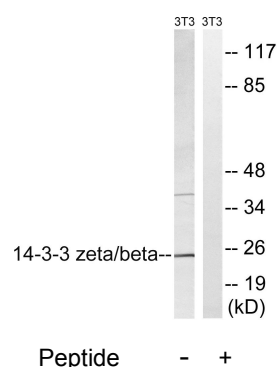
Storage Buffer

Rabbit IgG in phosphate buffered saline (without Mg²⁺ and Ca²⁺), pH 7.4, 150mM NaCl, 0.02% sodium azide and 50% glycerol.

Storage Instructions

Stable for 1 year at -20°C from date of shipment. For maximum recovery of product, centrifuge the original vial after thawing and prior to removing the cap. Aliquot to avoid repeated freezing and thawing. Aliquot will be stable at 4°C for 3 months.

Images



Western blot analysis of extracts from 3T3 cells, using 14-3-3 β/ζ (Ab-184/186) antibody.