

Anti-CDC25A (Ab-507) Polyclonal Antibody



Catalog No.	Size
A200170-01	50 μ l
A200170-02	100 μ l

Specificity	Anti-CDC25A (Ab-507) (human mouse rat)
Source	Rabbit Polyclonal
Application	WB ELISA
Form	Liquid, 1 mg/ml

Product

Swiss-Prot No.: P30304

Other Names: CDC25M3; Dual specificity phosphatase Cdc25A; M-phase inducer

Specificity and Sensitivity

CDC25A (Ab-507) antibody detects endogenous levels of total CDC25A protein.

Source and Purification

The antiserum was produced against synthesized non-phosphopeptide derived from human CDC25A around the phosphorylation site of threonine 507 (M-S-S^P-T-I).

The antibody was affinity-purified from rabbit antiserum by affinity-chromatography using epitope-specific immunogen.

Application Notes

Optimal working dilutions should be determined experimentally by the investigator. Suggested starting dilutions are as follows:

WB: 1:500~1:3000 ELISA: 1:20000

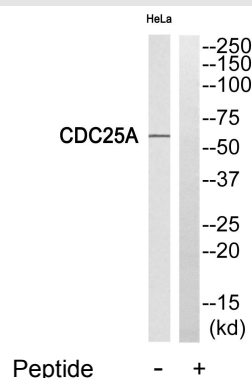
Storage Buffer

Rabbit IgG in phosphate buffered saline (without Mg²⁺ and Ca²⁺), pH 7.4, 150mM NaCl, 0.02% sodium azide and 50% glycerol.

Storage Instructions

Stable for 1 year at -20°C from date of shipment. For maximum recovery of product, centrifuge the original vial after thawing and prior to removing the cap. Aliquot to avoid repeated freezing and thawing. Aliquot will be stable at 4°C for 3 months.

Images



Western blot analysis of extracts from HeLa cells, using CDC25A (Ab-507) antibody.