

# Anti-AKT1/2/3 (Ab-315/316/312) Polyclonal Antibody



<u>Catalog No.</u>	<u>Size</u>
A200195-01	50 µl
A200195-02	100 µl

<b>Specificity</b>	Anti-AKT1/2/3 (Ab-315/316/312) (human mouse rat)
<b>Source</b>	Rabbit Polyclonal
<b>Application</b>	WB ELISA IHC
<b>Form</b>	Liquid, 1 mg/ml

## Product

**Swiss-Prot No.:** P31749/P31751/Q9Y243

**Other Names:** AKT; AKT1 kinase; C-AKT; EC 2.7.11.1; kinase Akt1; PKB; PKB-alpha; Protein kinase B; RAC; RAC-alpha serine/threonine kinase; RAC-PK-alpha

## Specificity and Sensitivity

AKT1/2/3 (Ab-315/316/312) antibody detects endogenous levels of total AKT1/2/3 protein.

## Source and Purification

The antiserum was produced against synthesized non-phosphopeptide derived from human AKT1/2/3 around the phosphorylation site of tyrosine 315/316/312 (P-E-Y<sup>P</sup>-L-A).

The antibody was affinity-purified from rabbit antiserum by affinity-chromatography using epitope-specific immunogen.

## Application Notes

Optimal working dilutions should be determined experimentally by the investigator. Suggested starting dilutions are as follows:

WB: 1:500~1:3000    IHC: 1:50~1:100    ELISA: 1:40000

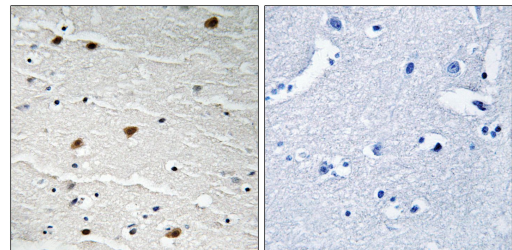
## Storage Buffer

Rabbit IgG in phosphate buffered saline (without Mg<sup>2+</sup> and Ca<sup>2+</sup>), pH 7.4, 150mM NaCl, 0.02% sodium azide and 50% glycerol.

## Storage Instructions

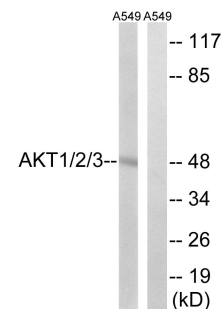
Stable for 1 year at -20°C from date of shipment. For maximum recovery of product, centrifuge the original vial after thawing and prior to removing the cap. Aliquot to avoid repeated freezing and thawing. Aliquot will be stable at 4°C for 3 months.

## Images



Peptide                    -                    +

Immunohistochemistry analysis of paraffin-embedded human brain tissue using AKT1/2/3 (Ab-315/316/312) antibody.



Peptide                    -                    +

Western blot analysis of extracts from A549 cells, using AKT1/2/3 (Ab-315/316/312) antibody.