

# Anti-B-RAF (Ab-446) Polyclonal Antibody



| Catalog No. | Size   |
|-------------|--------|
| A200198-01  | 50 µl  |
| A200198-02  | 100 µl |

|                    |                                   |
|--------------------|-----------------------------------|
| <b>Specificity</b> | Anti-B-RAF (Ab-446) (human mouse) |
| <b>Source</b>      | Rabbit Polyclonal                 |
| <b>Application</b> | WB ELISA IHC                      |
| <b>Form</b>        | Liquid, 1 mg/ml                   |

## Product

**Swiss-Prot No.:** P15056

**Other Names:** B-RAF; B-RAF proto-oncogene serine/threonine-protein kinase; B-Raf proto-oncogene serine/threonine-protein kinase; BRAF; BRAF1; c-RMIL; EC 2.7.1.37; EC 2.7.11.1; kinase B-Raf; p94; RAFB1; RMIL; RMIL serine/threonine-protein kinase; v-Raf murine sarcoma viral oncogene homolog B1

## Specificity and Sensitivity

B-RAF (Ab-446) antibody detects endogenous levels of total B-RAF protein.

## Source and Purification

The antiserum was produced against synthesized non-phosphopeptide derived from human B-RAF around the phosphorylation site of serine 446 (R-D-S<sup>P</sup>-S-D). The antibody was affinity-purified from rabbit antiserum by affinity-chromatography using epitope-specific immunogen.

## Application Notes

Optimal working dilutions should be determined experimentally by the investigator. Suggested starting dilutions are as follows:

WB: 1:500~1:3000 IHC: 1:50~1:100 ELISA: 1:40000

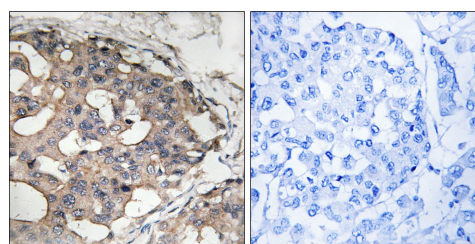
## Storage Buffer

Rabbit IgG in phosphate buffered saline (without Mg<sup>2+</sup> and Ca<sup>2+</sup>), pH 7.4, 150mM NaCl, 0.02% sodium azide and 50% glycerol.

## Storage Instructions

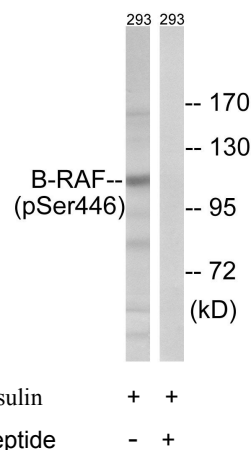
Stable for 1 year at -20°C from date of shipment. For maximum recovery of product, centrifuge the original vial after thawing and prior to removing the cap. Aliquot to avoid repeated freezing and thawing. Aliquot will be stable at 4°C for 3 months.

## Images



Peptide - +

Immunohistochemistry analysis of paraffin-embedded human breast carcinoma tissue using B-RAF (Ab-446) antibody.



Western blot analysis of extracts from 3T3 cells, treated with heat shock, using EPHB1/2/3/4 (Ab-600/602/614/596) antibody.