

Anti-ILK (Ab-246) Polyclonal Antibody



Catalog No.	Size
A200201-01	50 µl
A200201-02	100 µl

Specificity	Anti-ILK (Ab-246) (human mouse rat)
Source	Rabbit Polyclonal
Application	WB ELISA IHC
Form	Liquid, 1 mg/ml

Product

Swiss-Prot No.: Q13418

Other Names: 59 kDa serine/threonine protein kinase; EC 2.7.11.1; ILK-1; ILK1; Integrin-linked protein kinase; Integrin-linked protein kinase 1; kinase ILK; p59ILK

Specificity and Sensitivity

ILK (Ab-246) antibody detects endogenous levels of total ILK protein.

Source and Purification

The antiserum was produced against synthesized non-phosphopeptide derived from human ILK around the phosphorylation site of serine 246 (I-F-S^P-H-P). The antibody was affinity-purified from rabbit antiserum by affinity-chromatography using epitope-specific immunogen.

Application Notes

Optimal working dilutions should be determined experimentally by the investigator. Suggested starting dilutions are as follows:

WB: 1:500~1:3,000 IHC: 1:50~1:100 ELISA: 1:5000

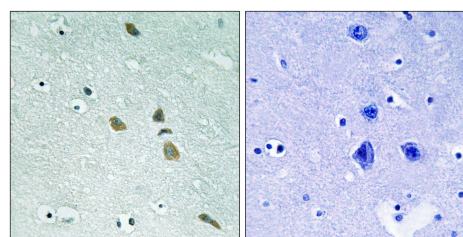
Storage Buffer

Rabbit IgG in phosphate buffered saline (without Mg²⁺ and Ca²⁺), pH 7.4, 150mM NaCl, 0.02% sodium azide and 50% glycerol.

Storage Instructions

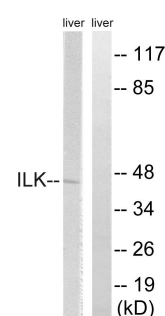
Stable for 1 year at -20°C from date of shipment. For maximum recovery of product, centrifuge the original vial after thawing and prior to removing the cap. Aliquot to avoid repeated freezing and thawing. Aliquot will be stable at 4°C for 3 months.

Images



P-peptide - +

Immunohistochemistry analysis of paraffin-embedded human brain tissue using ILK (Ab-246) antibody.



P-peptide - +

Western blot analysis of extracts from rat liver cells, using ILK (Ab-246) antibody.