

Anti-MSK2 (Ab-568) Polyclonal Antibody



<u>Catalog No.</u>	<u>Size</u>
A200214-01	50 µl
A200214-02	100 µl

Specificity	Anti-MSK2 (Ab-568) (human mouse)
Source	Rabbit Polyclonal
Application	WB ELISA
Form	Liquid, 1 mg/ml

Product

Swiss-Prot No.: O75676

Other Names: EC 2.7.11.1; kinase MSK2; KS6A4; Ribosomal protein kinase B; RPS6KA4; RSK-B; Similar to ribosomal protein S6 kinase, 90kD, polypeptide 4

Specificity and Sensitivity

MSK2 (Ab-568) antibody detects endogenous levels of total MSK2 protein.

Source and Purification

The antiserum was produced against synthesized non-phosphopeptide derived from human MSK2 around the phosphorylation site of threonine 568 (M-Q-T^P-P-C).

The antibody was affinity-purified from rabbit antiserum by affinity-chromatography using epitope-specific immunogen.

Application Notes

Optimal working dilutions should be determined experimentally by the investigator. Suggested starting dilutions are as follows:

WB: 1:500~1:3000 ELISA: 1:5000

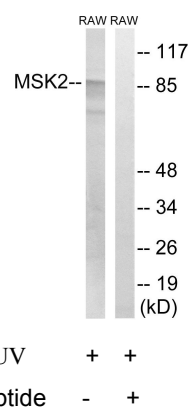
Storage Buffer

Rabbit IgG in phosphate buffered saline (without Mg²⁺ and Ca²⁺), pH 7.4, 150mM NaCl, 0.02% sodium azide and 50% glycerol.

Storage Instructions

Stable for 1 year at -20°C from date of shipment. For maximum recovery of product, centrifuge the original vial after thawing and prior to removing the cap. Aliquot to avoid repeated freezing and thawing. Aliquot will be stable at 4°C for 3 months.

Images



Western blot analysis of extracts from RAW264.7 cells, treated with UV (5mins), using MSK2 (Ab-568) antibody.