

Anti-PAK2 (Ab-141) Polyclonal Antibody



<u>Catalog No.</u>	<u>Size</u>
A200217-01	50 µl
A200217-02	100 µl

Specificity	Anti-PAK2 (Ab-141) (human mouse rat)
Source	Rabbit Polyclonal
Application	WB ELISA
Form	Liquid, 1 mg/ml

Product

Swiss-Prot No.: Q13177

Other Names: EC 2.7.11.1; gamma-PAK; kinase PAK2; P21-activated kinase 2; p21-activated kinase 2; p21-activated protein kinase I; PAK 2; PAK-2; PAK65; PAKI; S6/H4 kinase

Specificity and Sensitivity

PAK2 (Ab-141) antibody detects endogenous levels of total PAK2 protein.

Source and Purification

The antiserum was produced against synthesized non-phosphopeptide derived from human PAK2 around the phosphorylation site of serine 141 (Y-L-S^P-F-T).

The antibody was affinity-purified from rabbit antiserum by affinity-chromatography using epitope-specific immunogen.

Application Notes

Optimal working dilutions should be determined experimentally by the investigator. Suggested starting dilutions are as follows:

WB: 1:500~1:3000 ELISA: 1:20000

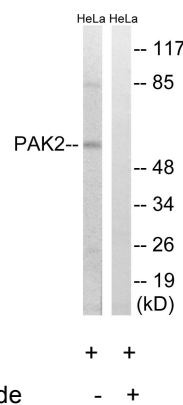
Storage Buffer

Rabbit IgG in phosphate buffered saline (without Mg²⁺ and Ca²⁺), pH 7.4, 150mM NaCl, 0.02% sodium azide and 50% glycerol.

Storage Instructions

Stable for 1 year at -20°C from date of shipment. For maximum recovery of product, centrifuge the original vial after thawing and prior to removing the cap. Aliquot to avoid repeated freezing and thawing. Aliquot will be stable at 4°C for 3 months.

Images



Western blot analysis of extracts from HeLa cells, treated with TSA (400nM, 24hours), using PAK2 (Ab-141) antibody.