

# Anti-RIPK2 (Ab-176) Polyclonal Antibody



<u>Catalog No.</u>	<u>Size</u>
A200226-01	50 µl
A200226-02	100 µl

<b>Specificity</b>	Anti-RIPK2 (Ab-176) (human mouse)
<b>Source</b>	Rabbit Polyclonal
<b>Application</b>	WB ELISA IHC
<b>Form</b>	Liquid, 1 mg/ml

## Product

**Swiss-Prot No.:** O43353

**Other Names:** CARD-containing IL-1 beta ICE-kinase; CARD-containing interleukin-1 beta converting enzyme associated kinase; CARDIAK; EC 2.7.11.1; kinase RIPK2; Receptor-interacting protein 2; Receptor-interacting serine/threonine protein kinase 2; RICK; RIP-2; RIP-like interacting CLARP kinase; RIP2; RIPK2

## Specificity and Sensitivity

RIPK2 (Ab-176) antibody detects endogenous levels of total RIPK2 protein.

## Source and Purification

The antiserum was produced against synthesized non-phosphopeptide derived from human RIPK2 around the phosphorylation site of serine 176 (S-L-S<sup>P</sup>-Q-S).

The antibody was affinity-purified from rabbit antiserum by affinity-chromatography using epitope-specific immunogen.

## Application Notes

Optimal working dilutions should be determined experimentally by the investigator. Suggested starting dilutions are as follows:

WB: 1:500~1:3000    IHC: 1:50~1:100    ELISA: 1:40000

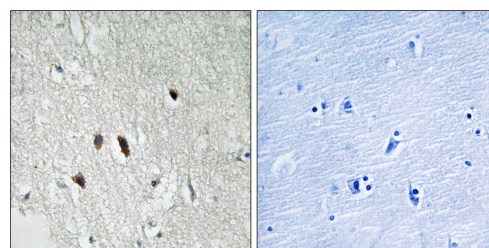
## Storage Buffer

Rabbit IgG in phosphate buffered saline (without Mg<sup>2+</sup> and Ca<sup>2+</sup>), pH 7.4, 150mM NaCl, 0.02% sodium azide and 50% glycerol.

## Storage Instructions

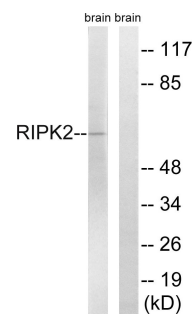
Stable for 1 year at -20°C from date of shipment. For maximum recovery of product, centrifuge the original vial after thawing and prior to removing the cap. Aliquot to avoid repeated freezing and thawing. Aliquot will be stable at 4°C for 3 months.

## Images



P-peptide       -                                 +

Immunohistochemistry analysis of paraffin-embedded human brain tissue using RIPK2 (Ab-176) antibody.



P-peptide       -         +

Western blot analysis of extracts from rat brain cells, using RIPK2 (Ab-176) antibody.