

Anti- LAT (Ab-161) Polyclonal Antibody



<u>Catalog No.</u>	<u>Size</u>
A200238-01	50µl
A200238-02	100µl

Specificity	Anti- LAT (Ab-161) (Human)
Source	Rabbit Polyclonal
Application	WB ELISA
Form	Liquid, 1 mg/ml

Background Information

Swiss-Prot No.: O43561

Other Names: 36 kDa phospho-tyrosine adaptor protein; Linker for activation of T cells; p36-38; pp36

Specificity and Sensitivity

LAT (Ab-161) antibody detects endogenous levels of total LAT protein.

Human (Identities = 100%, Positives = 100%)

Source and Purification

The antiserum was produced against synthesized non-phosphopeptide derived from human LAT around the phosphorylation site of tyrosine 161 (P-G-Y^P-L-V).

The antibody was affinity-purified from rabbit antiserum by affinity-chromatography using epitope-specific immunogen.

Application Notes

Optimal working dilutions should be determined experimentally by the investigator. Suggested starting dilutions are as follows: WB: 1:500~1:3000 ELISA: 1:10000

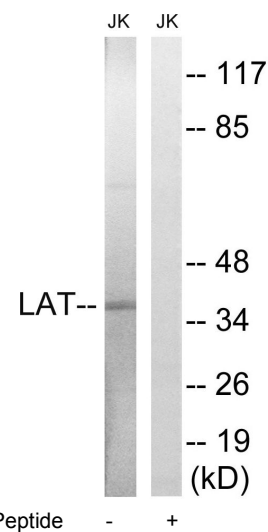
Storage Buffer

Rabbit IgG in phosphate buffered saline (without Mg²⁺ and Ca²⁺), pH 7.4, 150mM NaCl, 0.02% sodium azide and 50% glycerol.

Storage Instructions

Stable for 1 year at -20°C from date of shipment. For maximum recovery of product, centrifuge the original vial after thawing and prior to removing the cap. Aliquot to avoid repeated freezing and thawing. Aliquot will be stable at 4°C for 3 months.

Images



Western blot analysis of extracts from Jurkat cells, using LAT (Ab-161) antibody.