

Anti-Claudin 4 (Ab-208) Polyclonal Antibody



<u>Catalog No.</u>	<u>Size</u>
A200277-01	50 µl
A200277-02	100 µl

Specificity	Anti-Claudin 4 (Ab-208) (human)
Source	Rabbit Polyclonal
Application	WB ELISA IHC
Form	Liquid, 1 mg/ml

Product

Swiss-Prot No.: O14493

Other Names: Claudin-4; CLD4; CLDN4; Clostridium perfringens enterotoxin receptor; CPE- receptor; CPE-R; CPER; CPETR1; WBSR8; Williams-Beuren syndrome chromosome region 8 protein

Specificity and Sensitivity

Claudin 4 (Ab-208) antibody detects endogenous levels of total Claudin 4 protein.

Source and Purification

The antiserum was produced against synthesized peptide derived from Internal of human Claudin 4.

The antibody was affinity-purified from rabbit antiserum by affinity-chromatography using epitope-specific immunogen.

Application Notes

Optimal working dilutions should be determined experimentally by the investigator. Suggested starting dilutions are as follows:

WB: 1:500~1:3000 IHC: 1:50~1:100 ELISA: 1:1000

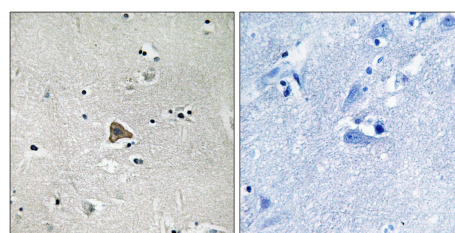
Storage Buffer

Rabbit IgG in phosphate buffered saline (without Mg²⁺ and Ca²⁺), pH 7.4, 150mM NaCl, 0.02% sodium azide and 50% glycerol.

Storage Instructions

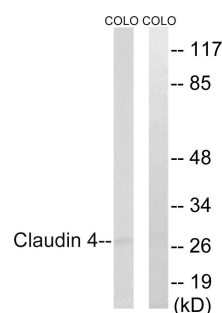
Stable for 1 year at -20°C from date of shipment. For maximum recovery of product, centrifuge the original vial after thawing and prior to removing the cap. Aliquot to avoid repeated freezing and thawing. Aliquot will be stable at 4°C for 3 months.

Images



Peptide - +

Immunohistochemistry analysis of paraffin-embedded human brain tissue, using Claudin 4 (Ab-208) antibody.



Peptide - +

Western blot analysis of extracts from COLO cells, using Claudin 4 (Ab-208) antibody.