

Anti-CRMP-2 (Ab-509) Polyclonal Antibody



<u>Catalog No.</u>	<u>Size</u>
A200278-01	50 µl
A200278-02	100 µl

Specificity	Anti-CRMP-2 (Ab-509) (human mouse rat)
Source	Rabbit Polyclonal
Application	WB ELISA IHC
Form	Liquid, 1 mg/ml

Product

Swiss-Prot No.: Q16555

Other Names: Collapsin response mediator protein 2; CRMP2; Dihydropyrimidinase related protein-2; DPYL2; DPYSL2; DRP-2; N2A3; TOAD-64; Turned on after division, 64 kDa protein; ULIP 2 protein; ULIP2

Specificity and Sensitivity

CRMP-2 (Ab-509) antibody detects endogenous levels of total CRMP-2 protein.

Source and Purification

The antiserum was produced against synthesized non-phosphopeptide derived from human CRMP-2 around the phosphorylation site of threonine 509 (S-V-T^P-P-K).

The antibody was affinity-purified from rabbit antiserum by affinity-chromatography using epitope-specific immunogen.

Application Notes

Optimal working dilutions should be determined experimentally by the investigator. Suggested starting dilutions are as follows:

WB: 1:500~1:3000 IHC: 1:50~1:100 ELISA: 1:20000

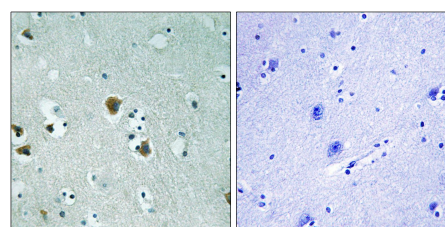
Storage Buffer

Rabbit IgG in phosphate buffered saline (without Mg²⁺ and Ca²⁺), pH 7.4, 150mM NaCl, 0.02% sodium azide and 50% glycerol.

Storage Instructions

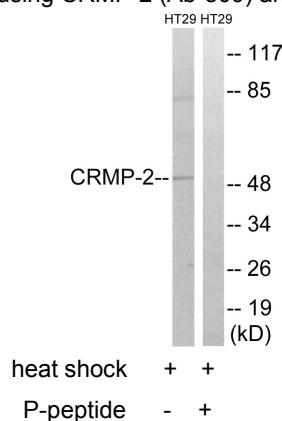
Stable for 1 year at -20°C from date of shipment. For maximum recovery of product, centrifuge the original vial after thawing and prior to removing the cap. Aliquot to avoid repeated freezing and thawing. Aliquot will be stable at 4°C for 3 months.

Images



P-peptide - +

Immunohistochemistry analysis of paraffin-embedded human brain tissue using CRMP-2 (Ab-509) antibody.



Western blot analysis of extracts from HT-29 cells, treated with heat shock, using CRMP-2 (Ab-509) antibody.