

# Anti-MAPKAPK2 (Ab-272) Polyclonal Antibody



Catalog No.	Size
A200284-01	50 µl
A200284-02	100 µl

Specificity	Anti-MAPKAPK2 (Ab-272) (human mouse rat)
Source	Rabbit Polyclonal
Application	WB ELISA IHC
Form	Liquid, 1 mg/ml

## Product

**Swiss-Prot No.:** P49137

**Other Names:** EC 2.7.11.1; kinase MAPKAPK2; MAP kinase-activated protein kinase 2; MAPK-activated protein kinase 2; MAPK2; MAPKAP kinase 2; MAPKAPK-2; MAPKAPK2; RPS6KC1

## Specificity and Sensitivity

MAPKAPK2 (Ab-272) antibody detects endogenous levels of total MAPKAPK2 protein.

## Source and Purification

The antiserum was produced against synthesized non-phosphopeptide derived from human MAPKAPK2 around the phosphorylation site of serine 272 (A-I-S<sup>P</sup>-P-G). The antibody was affinity-purified from rabbit antiserum by affinity-chromatography using epitope-specific immunogen.

## Application Notes

Optimal working dilutions should be determined experimentally by the investigator. Suggested starting dilutions are as follows:

WB: 1:500~1:3000 IHC: 1:50~1:100 ELISA: 1:1000

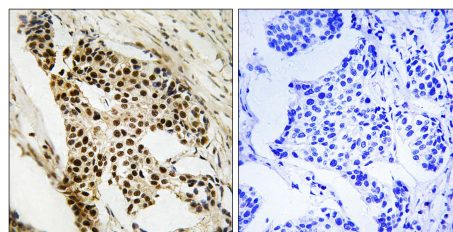
## Storage Buffer

Rabbit IgG in phosphate buffered saline (without Mg<sup>2+</sup> and Ca<sup>2+</sup>), pH 7.4, 150mM NaCl, 0.02% sodium azide and 50% glycerol.

## Storage Instructions

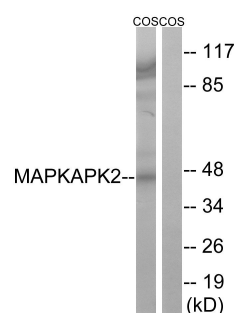
Stable for 1 year at -20°C from date of shipment. For maximum recovery of product, centrifuge the original vial after thawing and prior to removing the cap. Aliquot to avoid repeated freezing and thawing. Aliquot will be stable at 4°C for 3 months.

## Images



P-peptide - +

Immunohistochemistry analysis of paraffin-embedded human breast carcinoma tissue, using MAPKAPK2 (Ab-272) antibody.



P-peptide - +

Western blot analysis of extracts from COS cells, using MAPKAPK2 (Ab-272) antibody.