

Anti- Akt (Ab-129) Polyclonal Antibody



Catalog No.	Size
A200333-01	50µl
A200333-02	100µl

Specificity	Anti- Akt (Ab-129) (Human Mouse Rat)
Source	Rabbit Polyclonal
Application	WB ELISA IHC IF
Form	Liquid, 1 mg/ml

Background Information

Swiss-Prot No.: P31749

Other Names: AKT; AKT1 kinase; C-AKT; EC 2.7.11.1; kinase Akt1; PKB; PKB-alpha; Protein kinase B; RAC; RAC-alpha serine/threonine kinase; RAC-PK-alpha

Specificity and Sensitivity

Akt (Ab-129) antibody detects endogenous levels of total Akt protein.

Source and Purification

The antiserum was produced against synthesized non-phosphopeptide derived from human Akt around the phosphorylation site of serine 129 (D-N-S^P-G-A). The antibody was affinity-purified from rabbit antiserum by affinity-chromatography using epitope-specific immunogen.

Application Notes

Optimal working dilutions should be determined experimentally by the investigator. Suggested starting dilutions are as follows:

WB: 1:500~1:3000 IHC: 1:50~1:100 IF: 1:100~1:500
ELISA: 1:40000

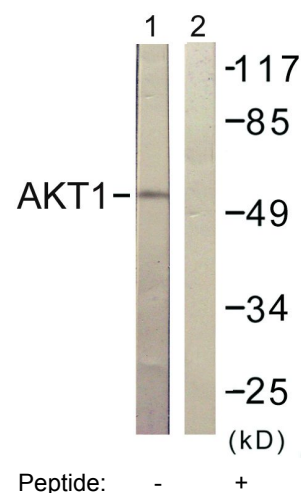
Storage Buffer

Rabbit IgG in phosphate buffered saline (without Mg²⁺ and Ca²⁺), pH 7.4, 150mM NaCl, 0.02% sodium azide and 50% glycerol.

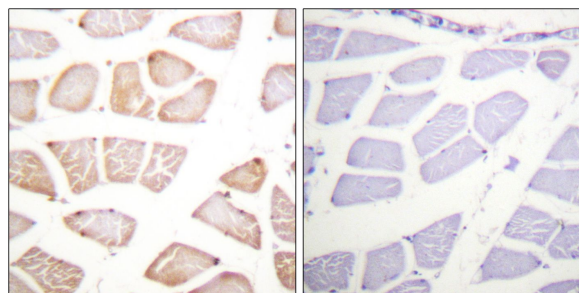
Storage Instructions

Stable for 1 year at -20°C from date of shipment. For maximum recovery of product, centrifuge the original vial after thawing and prior to removing the cap. Aliquot to avoid repeated freezing and thawing. Aliquot will be stable at 4°C for 3 months.

Images



Western blot analysis of extracts from HuvEc cells, treated with Serum (30%, 30mins), using Akt (Ab-129) antibody.



Immunohistochemistry analysis of paraffin-embedded human skeletal muscle tissue, using Akt (Ab-129) antibody.