

# Anti- GSK3 $\beta$ (Ab-9) Polyclonal Antibody



Catalog No.	Size
A200337-01	50 $\mu$ l
A200337-02	100 $\mu$ l

<b>Specificity</b>	Anti- GSK3 $\beta$ (Ab-9) (Human Mouse Rat)
<b>Source</b>	Rabbit Polyclonal
<b>Application</b>	WB IHC ELISA IP
<b>Form</b>	Liquid, 1 mg/ml

## Background Information

**Swiss-Prot No.:** P49841

**Other Names:** glycogen synthase kinase 3 beta; Glycogen synthase kinase-3 beta; GSK-3 beta; GSK3B; GSK3beta isoform

## Specificity and Sensitivity

GSK3 $\beta$  (Ab-9) antibody detects endogenous levels of total GSK3 $\beta$  protein.

## Source and Purification

The antiserum was produced against synthesized non-phosphopeptide derived from human GSK3 $\beta$  around the phosphorylation site of serine 9.

The antibody was affinity-purified from rabbit antiserum by affinity-chromatography using epitope-specific immunogen.

## Application Notes

Optimal working dilutions should be determined experimentally by the investigator. Suggested starting dilutions are as follows:

WB: 1:500~1:3000      IHC: 1:50~1:100  
ELISA: 1:20000      IP: Various Dilution

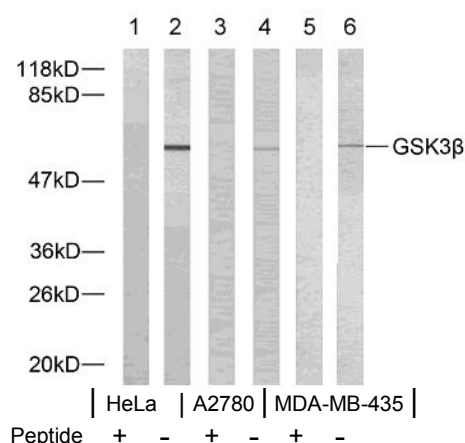
## Storage Buffer

Rabbit IgG in phosphate buffered saline (without Mg<sup>2+</sup> and Ca<sup>2+</sup>), pH 7.4, 150mM NaCl, 0.02% sodium azide and 50% glycerol.

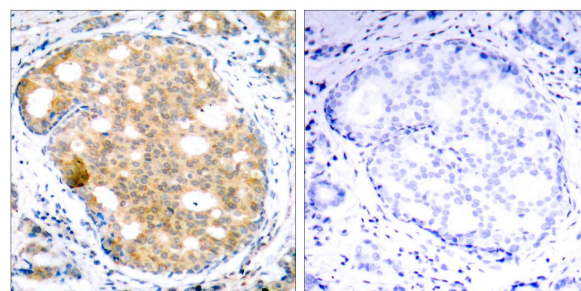
## Storage Instructions

Stable for 1 year at -20°C from date of shipment. For maximum recovery of product, centrifuge the original vial after thawing and prior to removing the cap. Aliquot to avoid repeated freezing and thawing. Aliquot will be stable at 4°C for 3 months.

## Images



Western blot analysis of extracts using GSK3 $\beta$  (Ab-9) antibody.



Peptide                      -                      +  
Immunohistochemical analysis of paraffin- embedded human breast carcinoma tissue using GSK3 $\beta$  (Ab-9) antibody.