

Anti-p70 S6 Kinase (Ab-371) Polyclonal Antibody



Catalog No.	Size
A200340-01	50 µl
A200340-02	100 µl

Specificity	Anti-p70 S6 Kinase (Ab-371) (Human Mouse Rat)
Source	Rabbit Polyclonal
Application	WB ELISA IHC IF
Form	Liquid, 1 mg/ml

Product

Swiss-Prot No.: P23443

Other Names: EC 2.7.11.1, KS6B1, P70-S6K, RPS6KB1, Ribosomal protein S6 kinase, Ribosomal protein S6 kinase, 70kDa, polypeptide 1, S6K, kinase p70S6K, p70-S6K

Specificity and Sensitivity

p70 S6 Kinase (Ab-371) antibody detects endogenous levels of total p70 S6 Kinase protein.

Source and Purification

The antiserum was produced against synthesized non-phosphopeptide derived from human p70 S6 Kinase around the phosphorylation site of serine 371 (V-D-S^P-P-D). The antibody was affinity-purified from rabbit antiserum by affinity-chromatography using epitope-specific immunogen.

Application Notes

Optimal working dilutions should be determined experimentally by the investigator. Suggested starting dilutions are as follows:

WB: 1:500~1:3000 IHC: 1:50~1:100

IF: 1:100~1:500 ELISA: 1:20000

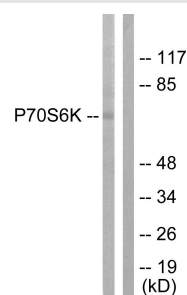
Storage Buffer

Rabbit IgG in phosphate buffered saline (without Mg²⁺ and Ca²⁺), pH 7.4, 150mM NaCl, 0.02% sodium azide and 50% glycerol.

Storage Instructions

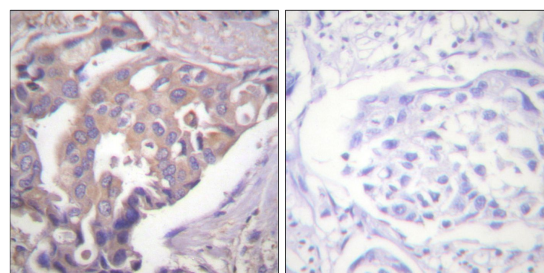
Stable for 1 year at -20°C from date of shipment. For maximum recovery of product, centrifuge the original vial after thawing and prior to removing the cap. Aliquot to avoid repeated freezing and thawing. Aliquot will be stable at 4°C for 3 months.

Images



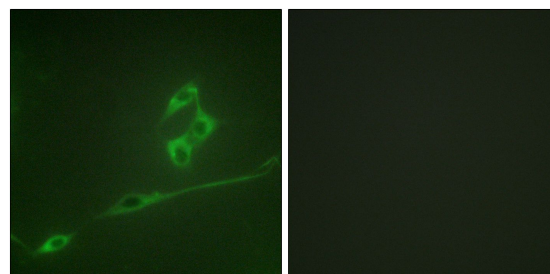
P-peptide - +

Western blot analysis of extracts from 293 cells, treated with serum (20%, 15mins), using p70 S6 Kinase (Ab-371) antibody.



P-peptide - +

Immunohistochemistry analysis of paraffin-embedded human breast carcinoma tissue using p70 S6 Kinase (Ab-371) antibody.



P-peptide - +

Immunofluorescence analysis of NIH/3T3 cells, using p70 S6 Kinase (Ab-371) antibody.