

Anti- Galectin 3 Polyclonal Antibody



<u>Catalog No.</u>	<u>Size</u>
A300073-01	50 µl
A300073-02	100 µl

Specificity	Anti- Galectin 3 (human mouse rat)
Source	Rabbit Polyclonal
Application	WB ELISA IHC IF
Form	Liquid, 1 mg/ml

Product

Swiss-Prot No.: P17931

Other Names: 35 kDa lectin, CBP 35, Carbohydrate binding protein 35, GALBP, Galactose-specific lectin 3, Galactoside-binding protein, IgE-binding protein, L-31, L-34 galactoside-binding lectin, LEG3, LGALS3, Laminin-binding protein, Lectin L-29, MAC-2 antigen, MAC2

Specificity and Sensitivity

Galectin 3 antibody detects endogenous levels of total Galectin 3 protein.

Source and Purification

The antiserum was produced against synthesized peptide derived from human Galectin 3.

The antibody was affinity-purified from rabbit antiserum by affinity-chromatography using epitope-specific immunogen.

Application Notes

Optimal working dilutions should be determined experimentally by the investigator. Suggested starting dilutions are as follows:

WB: 1:500~1:3000 IHC: 1:50~1:100

ELISA: 1:5000 IF: 1:100~1:500

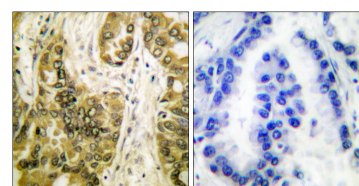
Storage Buffer

Rabbit IgG in phosphate buffered saline (without Mg²⁺ and Ca²⁺), pH 7.4, 150mM NaCl, 0.02% sodium azide and 50% glycerol.

Storage Instructions

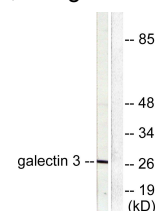
Stable for 1 year at -20°C from date of shipment. For maximum recovery of product, centrifuge the original vial after thawing and prior to removing the cap. Aliquot to avoid repeated freezing and thawing. Aliquot will be stable at 4°C for 3 months.

Images



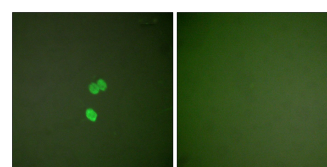
Peptide - +

Immunohistochemical analysis of paraffin-embedded human lung carcinoma tissue, using Galectin 3 antibody.



Peptide - +

Western blot analysis of extracts from HeLa cells, using Galectin 3 antibody.



Peptide - +

Immunofluorescence analysis of NIH/3T3 cells, using Galectin 3 antibody

Related Products

PW001: Super ECL Assay kit

E030120 : HRP, Goat Anti-Rabbit IgG(H+L)

E032221: Dylight 488, Donkey Anti-Rabbit IgG(H+L)

E021010: Anti-GAPDH Mouse Monoclonal Antibody

E021020: Anti-beta Actin Mouse Monoclonal Antibody

E022330: Anti-His Tag Mouse Monoclonal Antibody-HRP