

# Anti- MMP-19 Polyclonal Antibody



<u>Catalog No.</u>	<u>Size</u>
A300138-01	50 µl
A300138-02	100 µl

<b>Specificity</b>	Anti- MMP-19 (human mouse)
<b>Source</b>	Rabbit Polyclonal
<b>Application</b>	WB ELISA IHC
<b>Form</b>	Liquid, 1 mg/ml

## Product

**Swiss-Prot No.:** Q99542

**Other Names:** MATRIX METALLOPROTEINASE 18, FORMERLY, MMP18, FORMERLY, matrix metalloproteinase 19

## Specificity and Sensitivity

MMP-19 antibody detects endogenous levels of total MMP-19 protein.

## Source and Purification

The antiserum was produced against synthesized peptide derived from human MMP-19.

The antibody was affinity-purified from rabbit antiserum by affinity-chromatography using epitope-specific immunogen.

## Application Notes

Optimal working dilutions should be determined experimentally by the investigator. Suggested starting dilutions are as follows:

WB: 1:500~1:1000      ELISA: 1:10000

IHC: 1:50~1:100

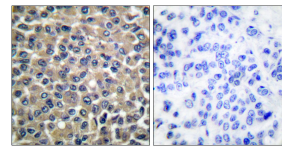
## Storage Buffer

Rabbit IgG in phosphate buffered saline (without Mg<sup>2+</sup> and Ca<sup>2+</sup>), pH 7.4, 150mM NaCl, 0.02% sodium azide and 50% glycerol.

## Storage Instructions

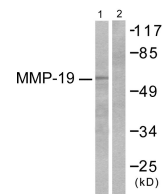
Stable for 1 year at -20°C from date of shipment. For maximum recovery of product, centrifuge the original vial after thawing and prior to removing the cap. Aliquot to avoid repeated freezing and thawing. Aliquot will be stable at 4°C for 3 months.

## Images



Peptide      -                      +

Immunohistochemical analysis of paraffin-embedded human breast carcinoma tissue using MMP-19 antibody.



Peptide      -                      +

Western blot analysis of extracts from HuvEc cells, using MMP-19 antibody.

## Related Products

E030120 : HRP, Goat Anti-Rabbit IgG(H+L)

E032221: Dylight 488, Donkey Anti-Rabbit IgG(H+L)

E021010: Anti-GAPDH Mouse Monoclonal Antibody

E021020: Anti-beta Actin Mouse Monoclonal Antibody

E022330: Anti-His Tag Mouse Monoclonal Antibody-HRP