

Anti- TAS2R13 Polyclonal Antibody



Catalog No.	Size
A400380-01	50µl
A400380-02	100µl

Specificity	Anti- TAS2R13 (Human)
Source	Rabbit Polyclonal
Application	WB ELISA IF
Form	Liquid, 1 mg/ml

Background Information

Swiss-Prot No.: Q9NYV9

Other Names: Taste receptor type 2 member 13; T2R13;
Taste receptor family B member 3; TRB3

Specificity and Sensitivity

Anti- TAS2R13 detects endogenous levels of total TAS2R13 protein.

Source and Purification

The antiserum was produced against synthesized peptide derived from internal of human TAS2R13.

The antibody was affinity-purified from rabbit antiserum by affinity-chromatography using epitope-specific immunogen.

Application Notes

Optimal working dilutions should be determined experimentally by the investigator. Suggested starting dilutions are as follows:

WB: 1:500~1:3000 IF: 1:100~1:500 ELISA: 1:10000

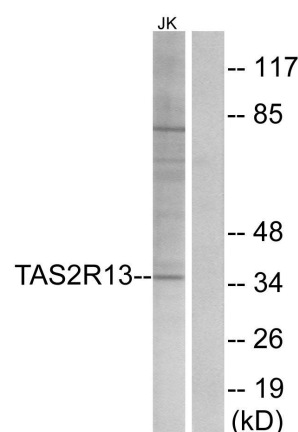
Storage Buffer

Rabbit IgG in phosphate buffered saline (without Mg^{2+} and Ca^{2+}), pH 7.4, 150mM NaCl, 0.02% sodium azide and 50% glycerol.

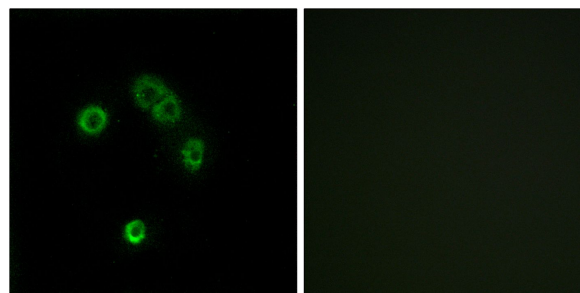
Storage Instructions

Stable for 1 year at $-20^{\circ}C$ from date of shipment. For maximum recovery of product, centrifuge the original vial after thawing and prior to removing the cap. Aliquot to avoid repeated freezing and thawing. Aliquot will be stable at $4^{\circ}C$ for 3 months.

Images



Western blot analysis of extracts from Jurkat cells, using TAS2R13 antibody.



Immunofluorescence analysis of MCF-7 cells, using TAS2R13 antibody.