

Anti-CD20 Mouse Monoclonal Antibody



<u>Catalog No.</u>	<u>Size</u>
E010050-01	50µl
E010050-02	100µl

Product Name	Anti- CD20 Mouse Monoclonal Antibody
Product type	Primary Antibody
Application	WB IHC IF
Description	Mouse Monoclonal to CD20 antibody
Immunogen	A synthetic peptide conjugated to KLH
Specificity	Human Mouse Rat

Background Information

CD20 is a non glycosylated protein with a molecular weight of 35 or 37 kDa depending on the degree of phosphorylation. Although not a member of the tetraspanin superfamily of cell surface receptors, it crosses the cell membrane four times. The CD20 antigen is present on human pre B lymphocytes and on B lymphocytes at all stages of maturation, except on plasma cells. Low level expression of the CD20 antigen has been detected on normal T lymphocytes. The CD20 molecule is involved in regulation of B cell differentiation, presumably via its reported function as a Ca⁺⁺ channel subunit.

Application Notes

Optimal working dilutions should be determined experimentally by the investigator. Prepare working dilution immediately before use. Suggested starting dilutions are as follows:

Western blot (1:1000-1:10,000), Immunofluorescence and Immunocytochemistry (1:200-1:800).

Host

Mouse

Clonality

Storage Buffer

1mg/ml in PBS, pH 7.4 with 0.02% sodium azide, 50% Glycerol.

Form

Liquid, 1mg/ml

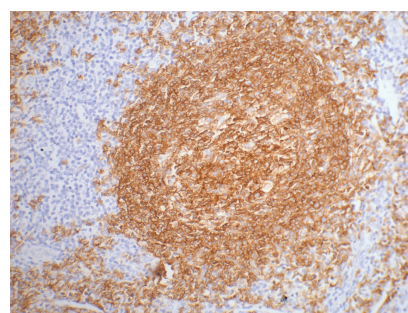
Storage Instructions

Stable for 1 year at -20°C from date of shipment. For maximum recovery of product, centrifuge the original vial after thawing and prior to removing the cap. Aliquot to avoid repeated freezing and thawing. Aliquot will be stable at 4°C for 3 months.

Images



Western blot analysis of CD20 expression in GA-10 diluted at 1:5000



1:200 dilution staining CD20 by immunohistochemistry on paraffin-embedded human tonsil tissue.