

# Anti-CD 21 Mouse Monoclonal Antibody



<u>Catalog No.</u>	<u>Size</u>
E010060-01	50µl
E010060-02	100µl

<b>Product Name</b>	Anti-CD 21 Mouse Monoclonal Antibody
<b>Product type</b>	Primary Antibody
<b>Application</b>	WB IHC IF
<b>Description</b>	Mouse Monoclonal to CD 21 antibody
<b>Immunogen</b>	A synthetic peptide conjugated to KLH
<b>Specificity</b>	Human Mouse Rat

## Background Information

CD21 also known as complement receptor 2 (CR2), C3d receptor or EBV receptor is a 140 kDa protein. CD21 is a glycosylated type I transmembrane protein consisting of an extracellular face of a series of 15 or 16 CCP domains. CD21 is the receptor for complement components C3d and iC3b as well as the Epstein-Barr virus (EBV) glycoprotein gp350/220. The soluble CD21 (sCD21) was shown to efficiently trigger CD23 signalling pathways in human monocytes. By inducing release of proinflammatory cytokines and upregulating expression of molecules involved in antigen presentation, sCD21 modulates critical monocyte functions that may be relevant to allergic and inflammatory disorders.

## Application Notes

Optimal working dilutions should be determined experimentally by the investigator. Prepare working dilution immediately before use. Suggested starting dilutions are as follows: Western blot (1:1000-1:5,000), Immunofluorescence and Immunocytochemistry (1:200-1:800).

## Host

Mouse

## Clonality

## Storage Buffer

1mg/ml in PBS, pH 7.4 with 0.02% sodium azide, 50% Glycerol.

## Form

Liquid, 1mg/ml

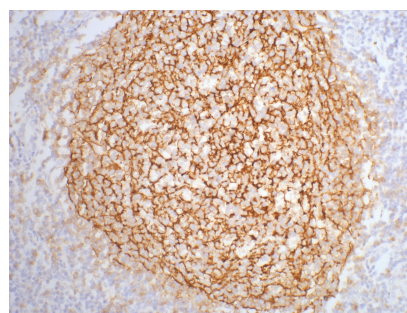
## Storage Instructions

Stable for 1 year at -20°C from date of shipment. For maximum recovery of product, centrifuge the original vial after thawing and prior to removing the cap. Aliquot to avoid repeated freezing and thawing. Aliquot will be stable at 4°C for 3 months.

## Images



Western blot analysis of K-562 cell lysate with CD21 mouse mAb diluted at 1:1000.



at 1: 100 dilution staining CD21 by immunohistochemistry on paraffin-embedded human tonsil tissue.