

# Anti-CD 23 Mouse Monoclonal Antibody



<u>Catalog No.</u>	<u>Size</u>
E010070-01	50µl
E010070-02	100µl

<b>Product Name</b>	Anti-CD 23 Mouse Monoclonal Antibody
<b>Product type</b>	Primary Antibody
<b>Application</b>	WB IHC IF
<b>Description</b>	Mouse Monoclonal to CD 23 antibody
<b>Immunogen</b>	A synthetic peptide conjugated to KLH
<b>Specificity</b>	Human Mouse Rat

## Background Information

The CD23 antigen is the low affinity IgE Fc receptor, which is a 49 kDa protein with 38 and 28 kDa fragments. It is expressed on most mature, conventional B cells and can also be found on the surface of T cells, macrophages, platelets and EBV transformed B lymphoblasts. Expression of CD23 has been detected in neoplastic cells from cases of B cell chronic Lymphocytic leukemia. CD23 is expressed by B cells in the follicular mantle but not by proliferating germinal centre cells. CD23 is also expressed by eosinophils.

## Application Notes

Optimal working dilutions should be determined experimentally by the investigator. Prepare working dilution immediately before use. Suggested starting dilutions are as follows: Western blot (1:1000-1:5,000), Immunofluorescence and Immunocytochemistry (1:200-1:800).

## Host

Mouse

## Clonality

## Storage Buffer

1mg/ml in PBS, pH 7.4 with 0.02% sodium azide, 50% Glycerol.

## Form

Liquid, 1mg/ml

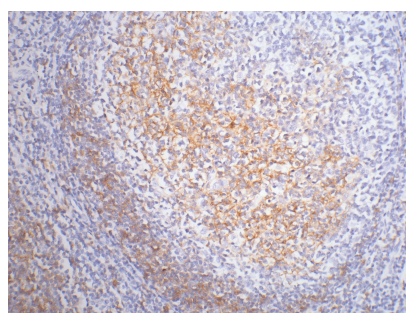
## Storage Instructions

Stable for 1 year at -20°C from date of shipment. For maximum recovery of product, centrifuge the original vial after thawing and prior to removing the cap. Aliquot to avoid repeated freezing and thawing. Aliquot will be stable at 4°C for 3 months.

## Images



Western blot analysis of NIH/3T3 cell lysate with CD23 mouse mAb diluted at 1:1000



1: 200 dilution staining CD23 by immunohistochemistry on paraffin-embedded human tonsil tissue.