

# Anti-CD 68 Mouse Monoclonal Antibody



<u>Catalog No.</u>	<u>Size</u>
E010090-01	50µl
E010090-02	100µl

<b>Product Name</b>	Anti-CD 68 Mouse Monoclonal Antibody
<b>Product type</b>	Primary Antibody
<b>Application</b>	WB IHC IF
<b>Description</b>	Mouse Monoclonal to CD 68 antibody
<b>Immunogen</b>	A synthetic peptide conjugated to KLH
<b>Specificity</b>	Human Mouse Rat

## Background Information

The CD68 antigen is a 37kD transmembrane protein that is post-translationally glycosylated to give a protein of 87-115kD. CD68 is specifically expressed by tissue macrophages, Langerhans cells and at low levels by dendritic cells. It could play a role in phagocytic activities of tissue macrophages, both in intracellular lysosomal metabolism and extracellular cell-cell and cell-pathogen interactions. It binds to tissue- and organ-specific lectins or selectins, allowing homing of macrophage subsets to particular sites. Rapid recirculation of CD68 from endosomes and lysosomes to the plasma membrane may allow macrophages to crawl over selectin bearing substrates or other cells.

## Application Notes

Optimal working dilutions should be determined experimentally by the investigator. Prepare working dilution immediately before use. Suggested starting dilutions are as follows: Western blot (1:1000-1:5,000), Immunofluorescence and Immunocytochemistry (1:200-1:800).

## Host

Mouse

## Clonality

## Storage Buffer

1mg/ml in PBS, pH 7.4 with 0.02% sodium azide, 50% Glycerol.

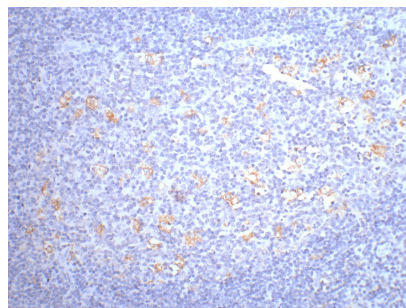
## Form

Liquid, 1mg/ml

## Storage Instructions

Stable for 1 year at -20°C from date of shipment. For maximum recovery of product, centrifuge the original vial after thawing and prior to removing the cap. Aliquot to avoid repeated freezing and thawing. Aliquot will be stable at 4°C for 3 months.

## Images



1:200 dilution staining CD68 by immunohistochemistry on paraffin-embedded human tonsil tissue..